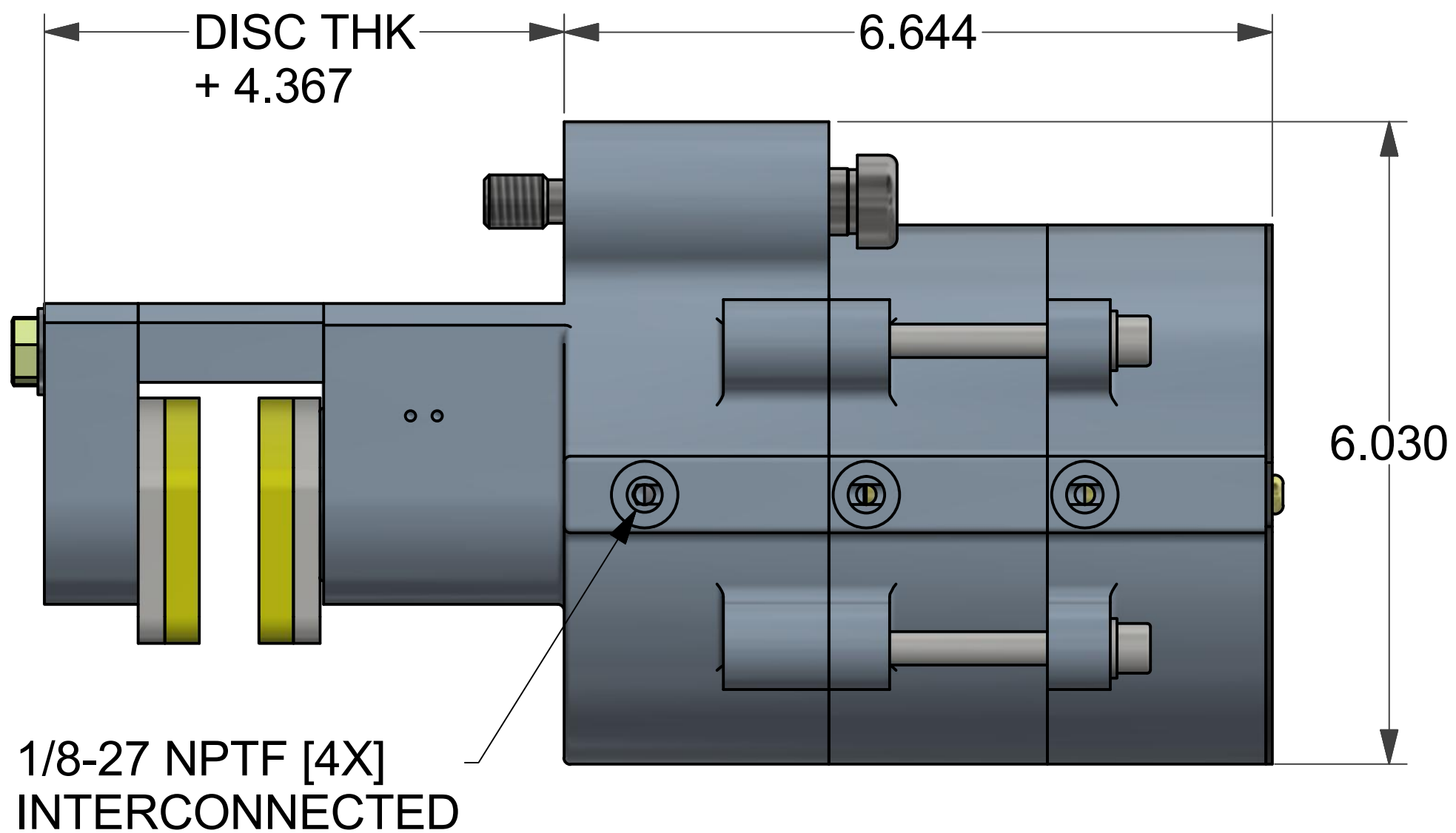
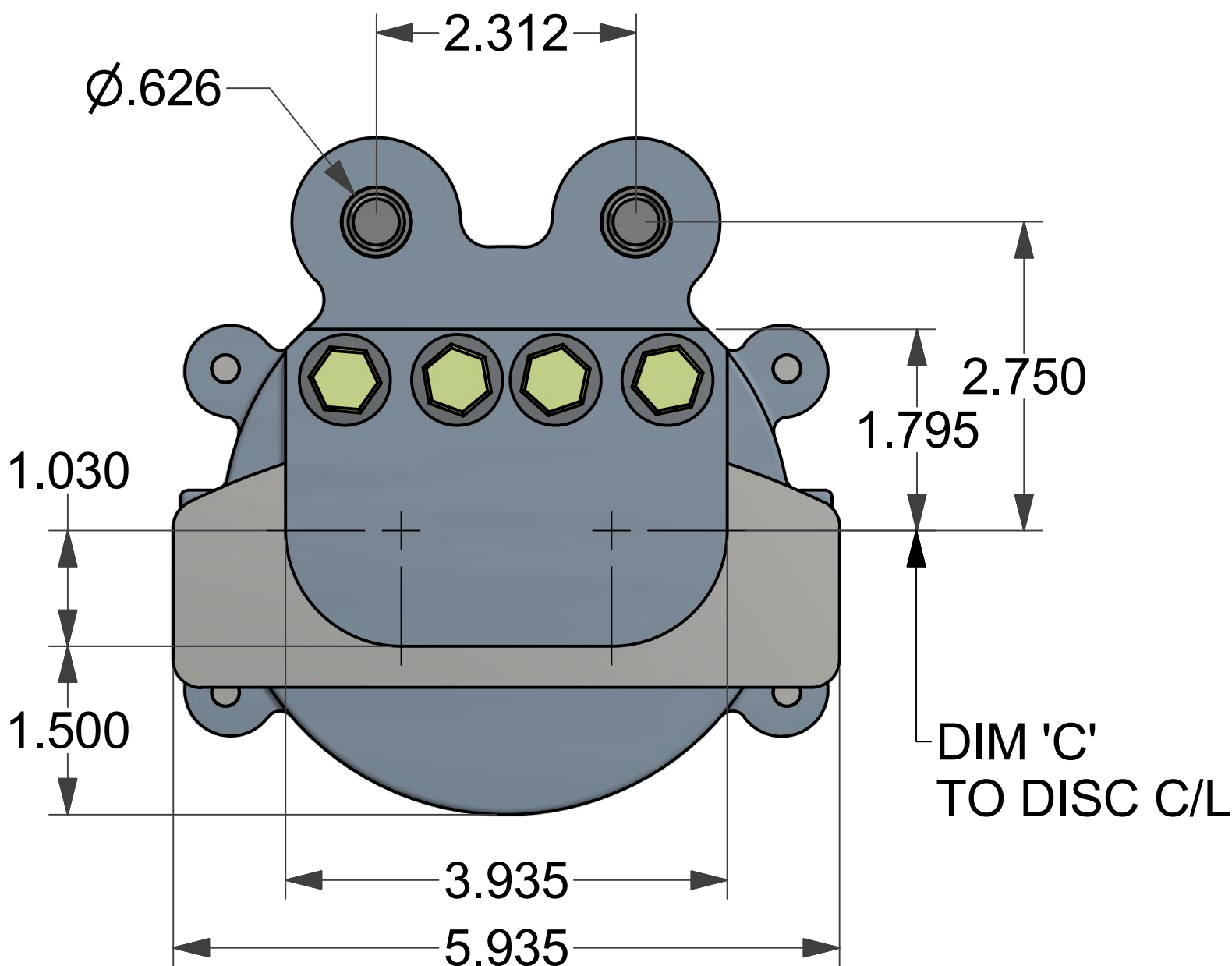
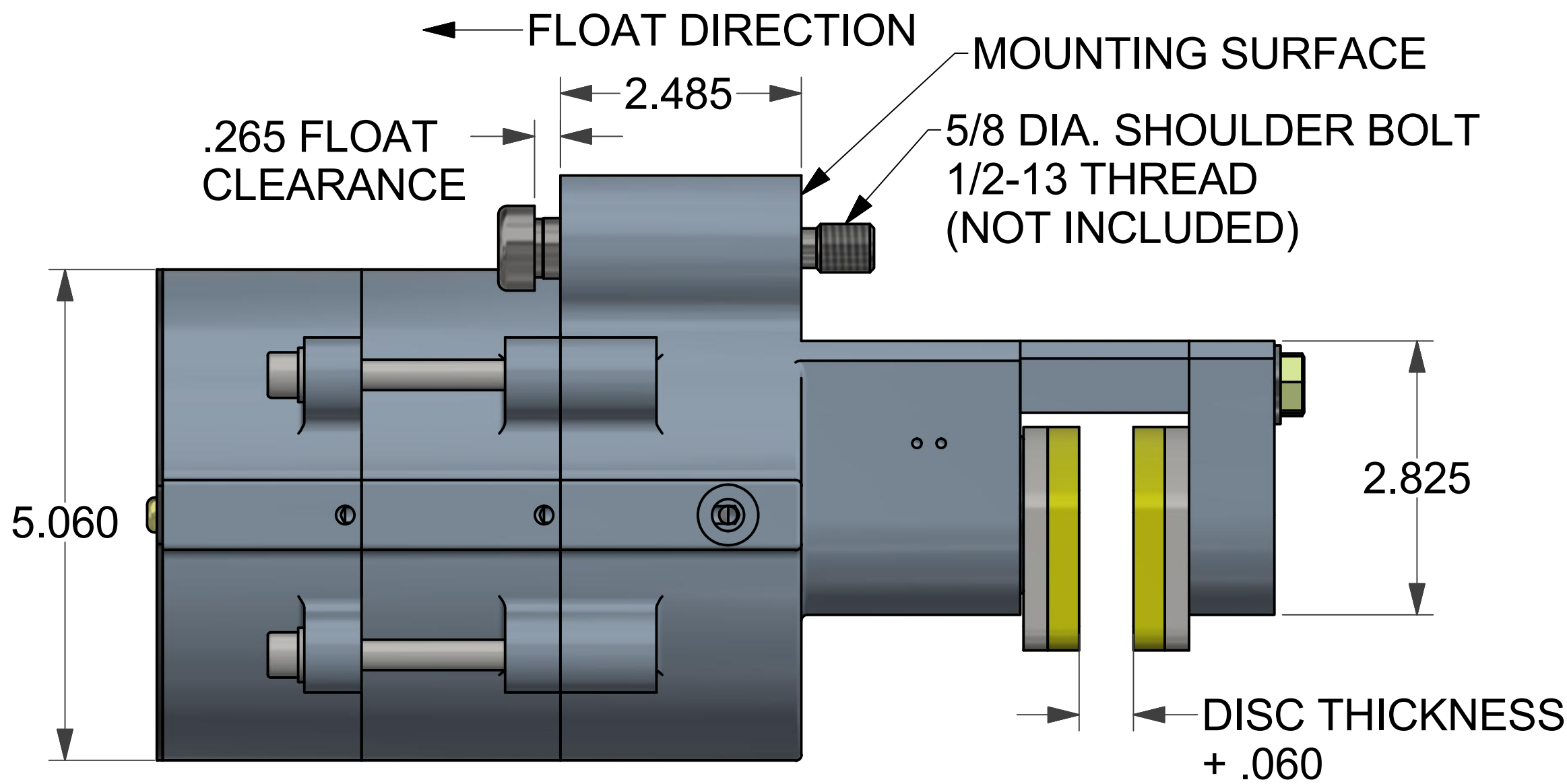
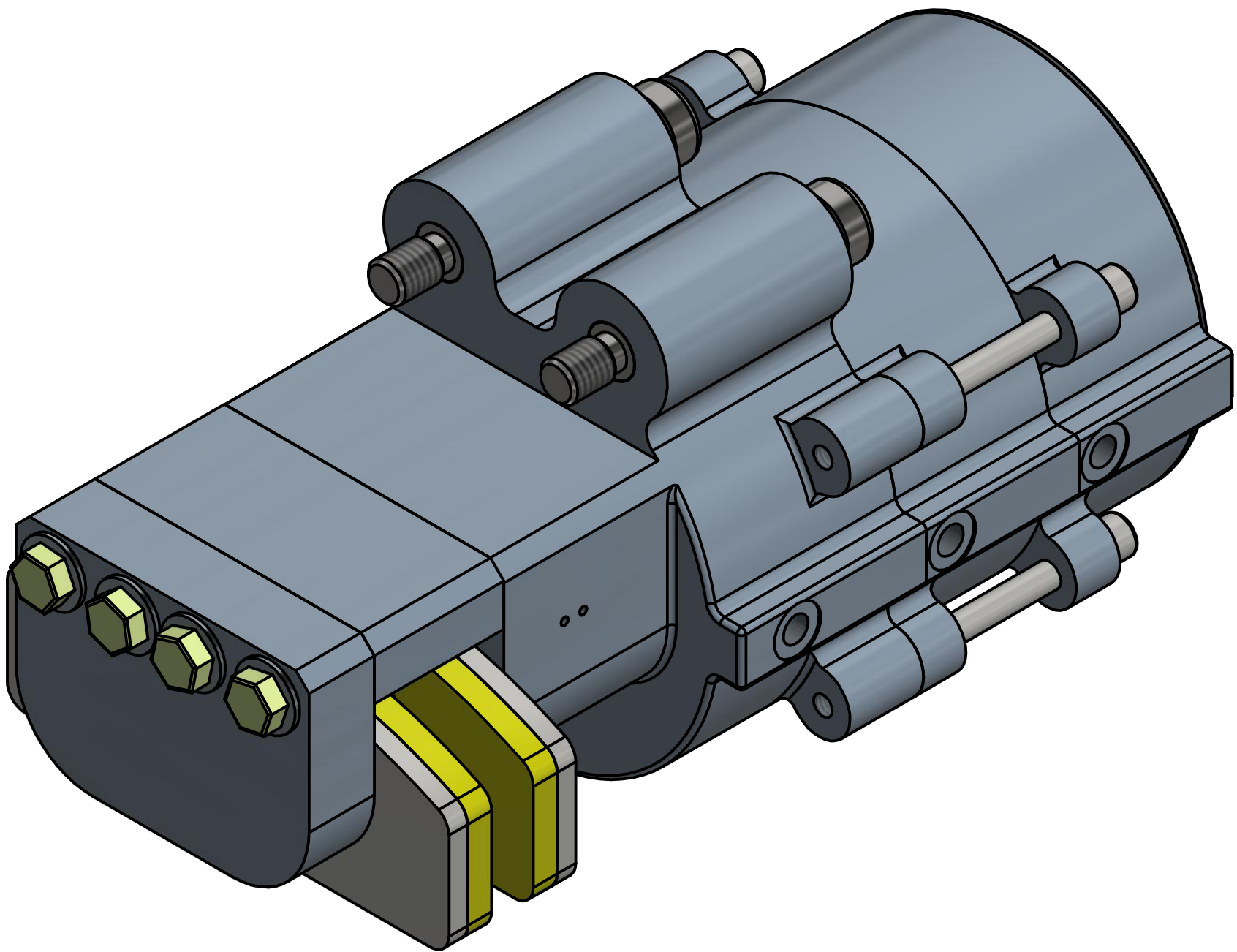


PART NO.	MODEL NO.	DISC THK.
4005-0125	PFS400IF-EP	3/16
4005-0126	PFS400BF-EP	1/4
4005-0127	PFS400LF-EP	3/8
4005-0128	PFS400EF-EP	1/2
4005-0129	PFS400JF-EP	5/8
4005-0130	PFS400TF-EP	3/4
4005-0131	PFS400OF-EP	1.0
4005-0132	PFS400QF-EP	1.125


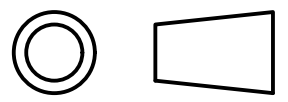
TOTAL PAD WEAR, INCHES	TANGENTIAL FORCE, LBS.
0	1,859
.06	1,549
.12	1,239
.18	929
.24	619
.30	309
.36	0

- * PFS400 SERIES BRAKES ARE FOR EMERGENCY STOP & HOLD APPLICATIONS ONLY
- * TORQUE = TANGENTIAL FORCE X BRAKING RADIUS, INCHES
- * 100 PSI RELEASE PRESSURE
- * UNLIMITED DISC DIAMETER
- * 4,130 LBS. OF CLAMPING FORCE
- * .45 COFF. OF FRICTION, PAD #951023
- * 23.89 SQ. INCHES OF FRICTION PAD AREA
- * 7.72 CUBIC INCHES OF WEARABLE PAD VOLUME
- * CAST ALUM. CONSTRUCTION
- * HARD COATED HOUSINGS
- * (2) SPRING STACKS IN PARALLEL 24 EA.
- * BUNA N SEALS, VITON OPTIONAL



BRAKING RADIUS (IN) = SQ. ROOT OF (DIM 'C' SQUARED + .8789)

DISC DIA.	DIM. 'C'	BRAKING RADIUS
12.0	5.030	5.11
16.0	7.030	7.09
18.0	8.030	8.08
20.0	9.030	9.08
22.0	10.030	10.07
30.0	14.030	14.06

 WC BRANHAM® SOLUTIONS IN MOTION 398 TROY STREET • RIVER FALLS, WISCONSIN 54022 U.S.A. © 2015 W.C. Branham Inc. All Rights Reserved.					
UNLESS OTHERWISE SPECIFIED: DO NOT SCALE DRAWING REMOVE ALL BURRS TAP DEPTHS FULL THRD DRILL DEPTHS FULL DIA.	THIRD ANGLE PROJECTION 		DESIGNER	DATE	
			CR	12/22/2010	
TOLERANCES .XX = ± .010 .XXX = ± .005 .XXXX = ± .0005	MATERIAL		REVISED BY	DATE	
THREADS EXTERNAL CLASS 2A INTERNAL CLASS 2B	WEIGHT N/A		TITLE PFS400-EP SERIES SPRING APPLIED/AIR RELEASE		
	SCALE	SHEET	SIZE	DRAWING NO.	REV
	3:4	1 of 1	D		