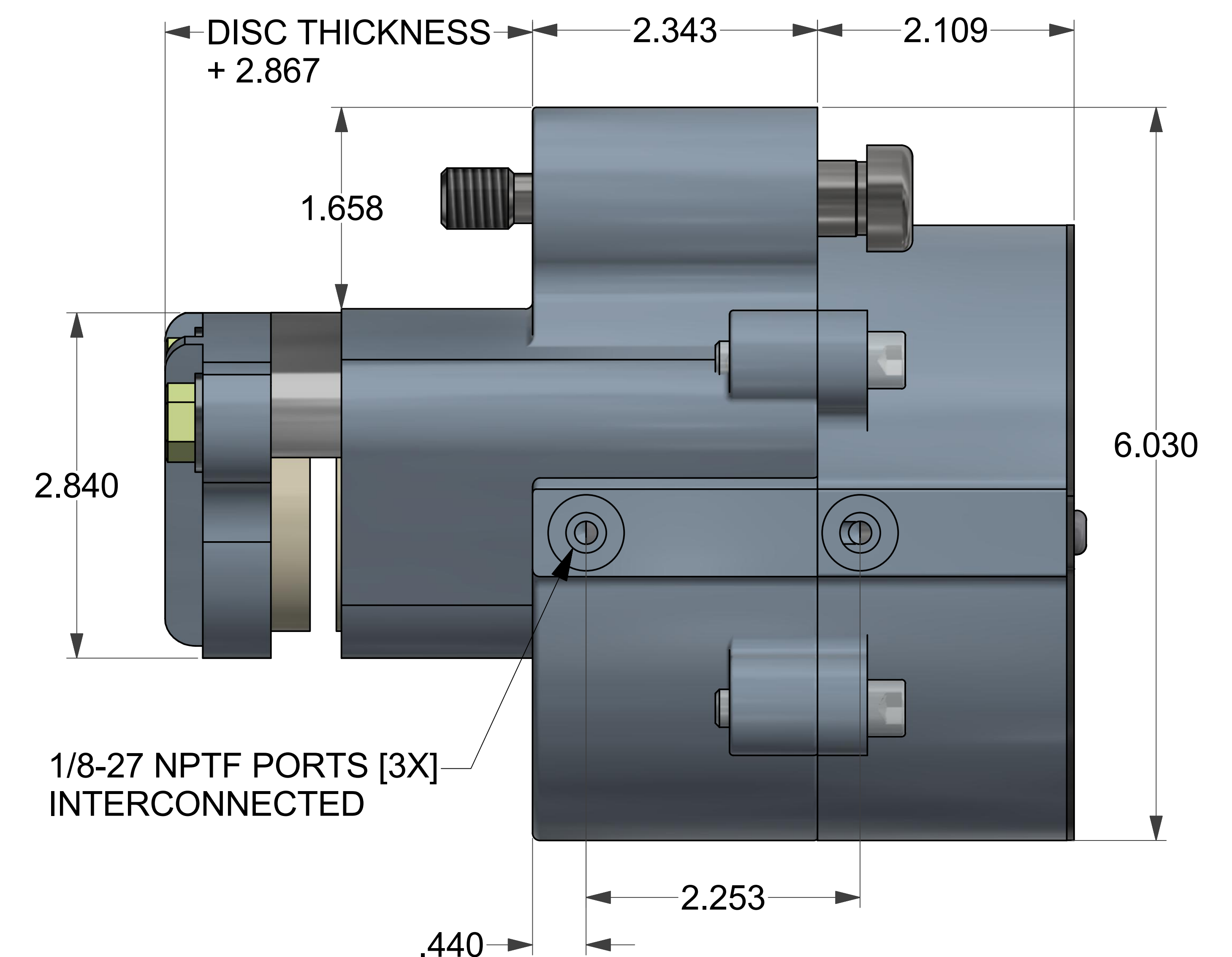
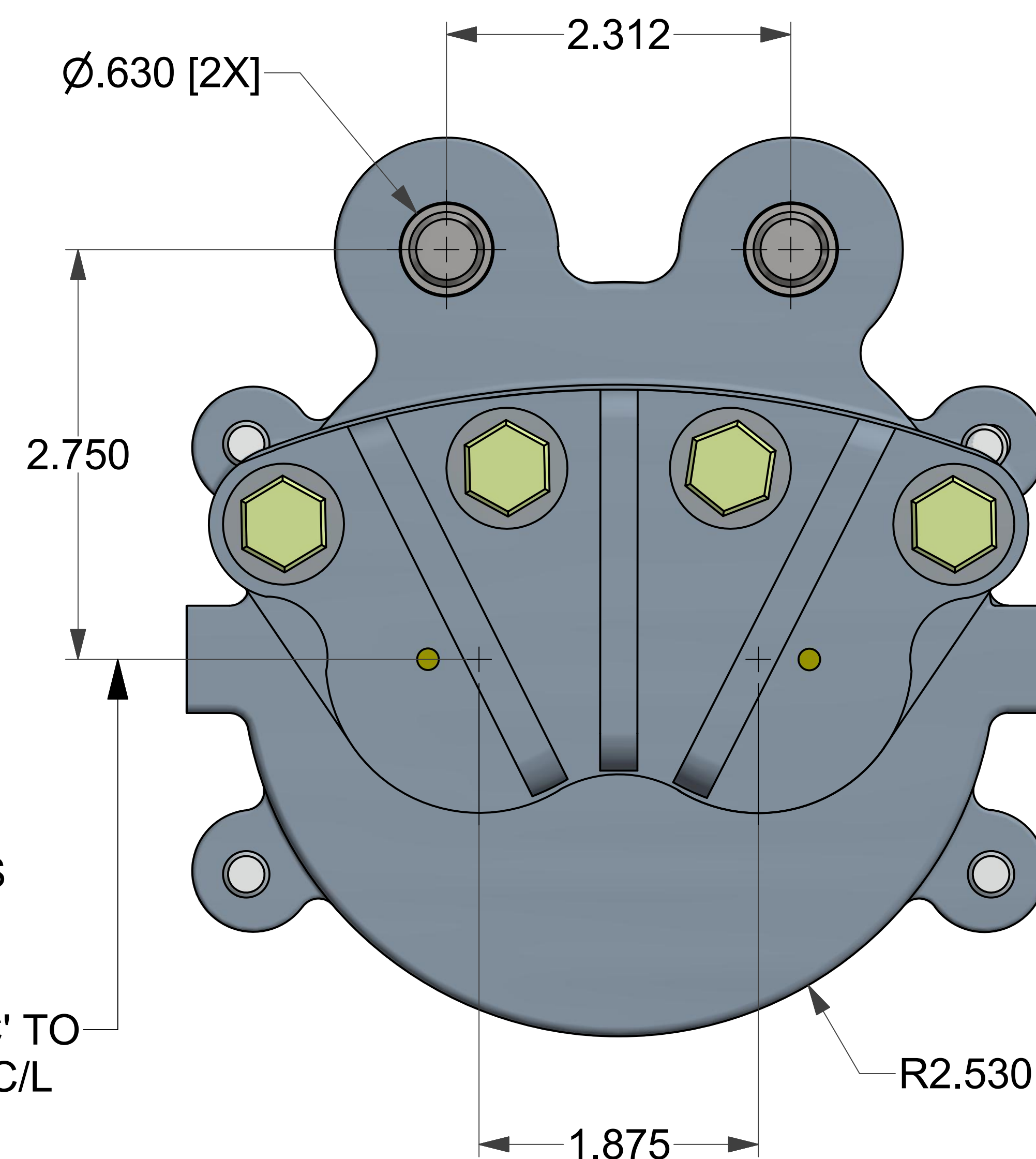
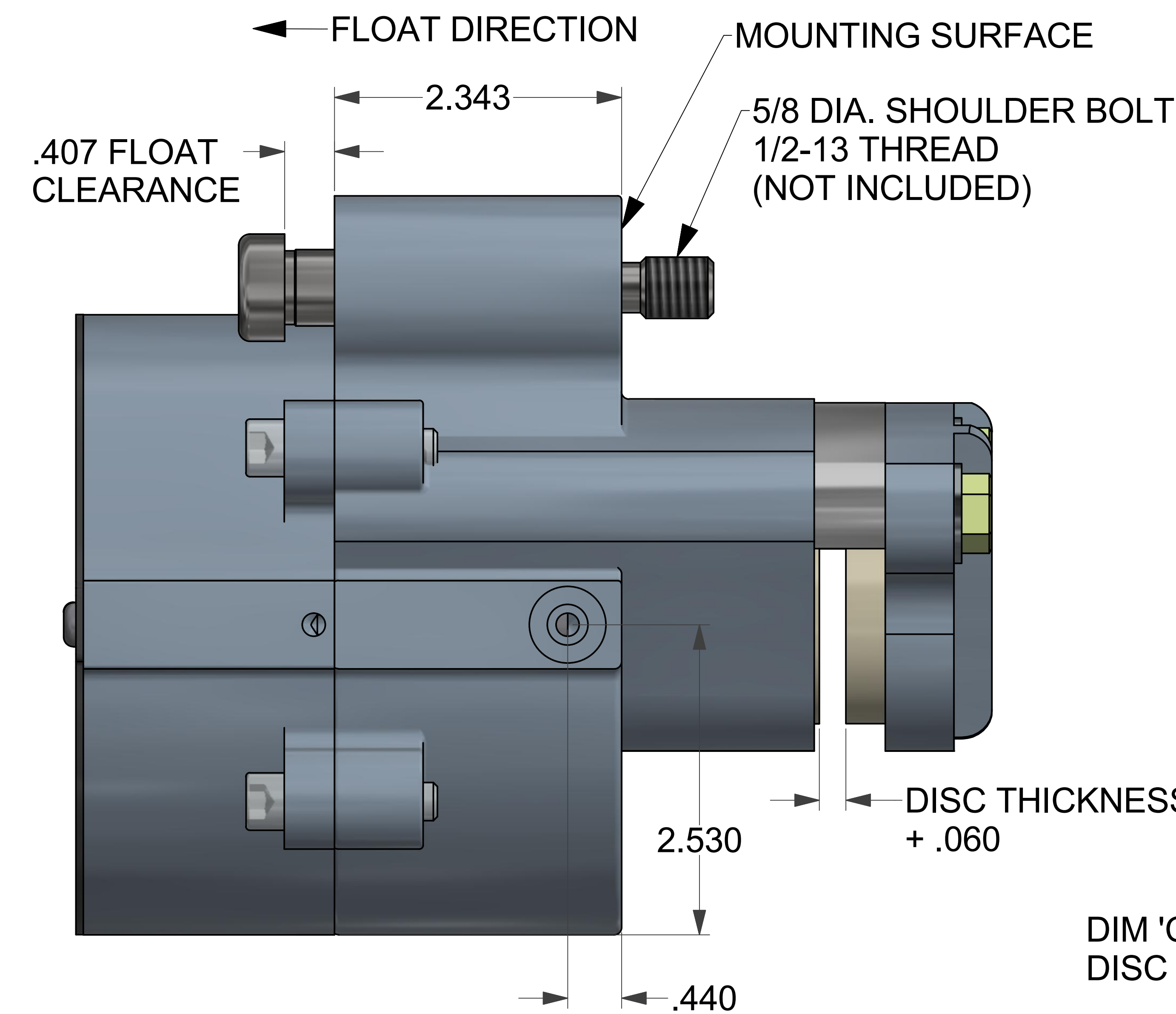
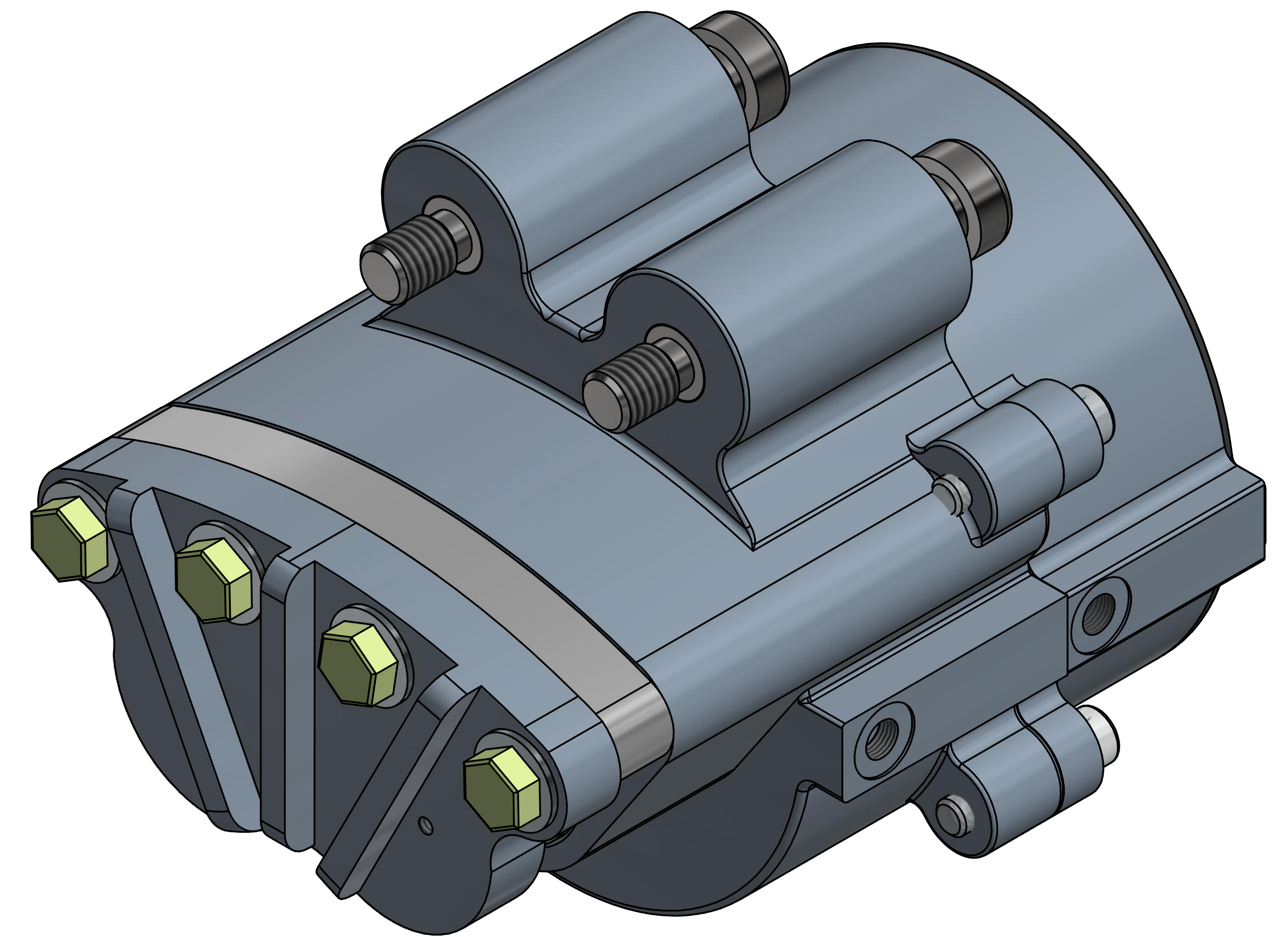


ASSY. NO.	MODEL	DISC THK.
4004-0231	PFS200AF	5/32
4004-0232	PFS200BF	1/4
4004-0233	PFS200LF	3/8
4004-0234	PFS200EF	1/2
4004-0265	PFS200TF	3/4

TOTAL PAD WEAR, INCHES	TANGENTIAL FORCE, LBS.
0	929
.06	774
.12	619
.18	464
.24	309
.30	154
.36	0

- *PFS200 SERIES BRAKES ARE FOR EMERGENCY STOP & HOLD APPLICATIONS ONLY.
- * SPACERS ARE AVAILABLE FOR OTHER DISC THICKNESSES.
- * TORQUE, IN. LBS. = TANGENTIAL FORCE, LBS. X BRAKING RADIUS, INCHES
- * PORTING -- (3) 1/8-27 NPTF. ALL PORTS INTERCONNECTED.
- * 85 PSI RELEASE PRESSURE
- * CAST ALUMINUM CONSTRUCTION
- * HARDCOATED HOUSINGS
- * 8.19 SQ. IN. TOTAL FRICTION PAD AREA
- * 16.00 INCH MAX. DISC DIAMETER
- * REPLACEABLE FRICTION PADS
- * DUAL BELLEVILLE DISC SPRING STACKS, 12 EACH
- * NON-ASBESTOS FRICTION MATERIAL
- * 2,065 LBS. OF CLAMPING FORCE
- * .45 COFF. OF FRICTION PAD #951023
- * BUNA N SEALS, VITON OPTIONAL
- * 1.52 CUBIC INCHES WEARABLE VOLUME



BRAKING RADIUS, INCHES = SQ. ROOT (DIM. 'C' SQUARED + .8789)

DISC DIA.	DIM. " C "	BRAKING RADIUS
8.0	3.03	3.17
10.0	4.03	4.14
12.0	5.03	5.11
16.0	7.09	7.15

FOR DISC DIAMETERS GREATER THAN 16.00 INCH SEE PFS200UL SERIES

WC BRANHAM SOLUTIONS IN MOTION 398 TROY STREET • RIVER FALLS, WISCONSIN 54022 U.S.A. copyright © W.C. Branham Inc. 2015. All Rights Reserved.		REVISION
		SIZE E
UNLESS OTHERWISE SPECIFIED: DO NOT SCALE DRAWING REMOVE ALL BURRS TAP DEPTHS FULL THD. DRILL DEPTHS FULL DIA.		TITLE PFS200 SERIES ALPHA VERSION
TOLERANCES 2 PLACE +/- .010 3 PLACE +/- .005	THIRD ANGLE PROJECTION DESIGNER CCR DATE 4/21/15	DRAWING NO.
THREADS EXTERNAL CLASS 2A INTERNAL CLASS 2B	CHECKER SCALE CLASS	