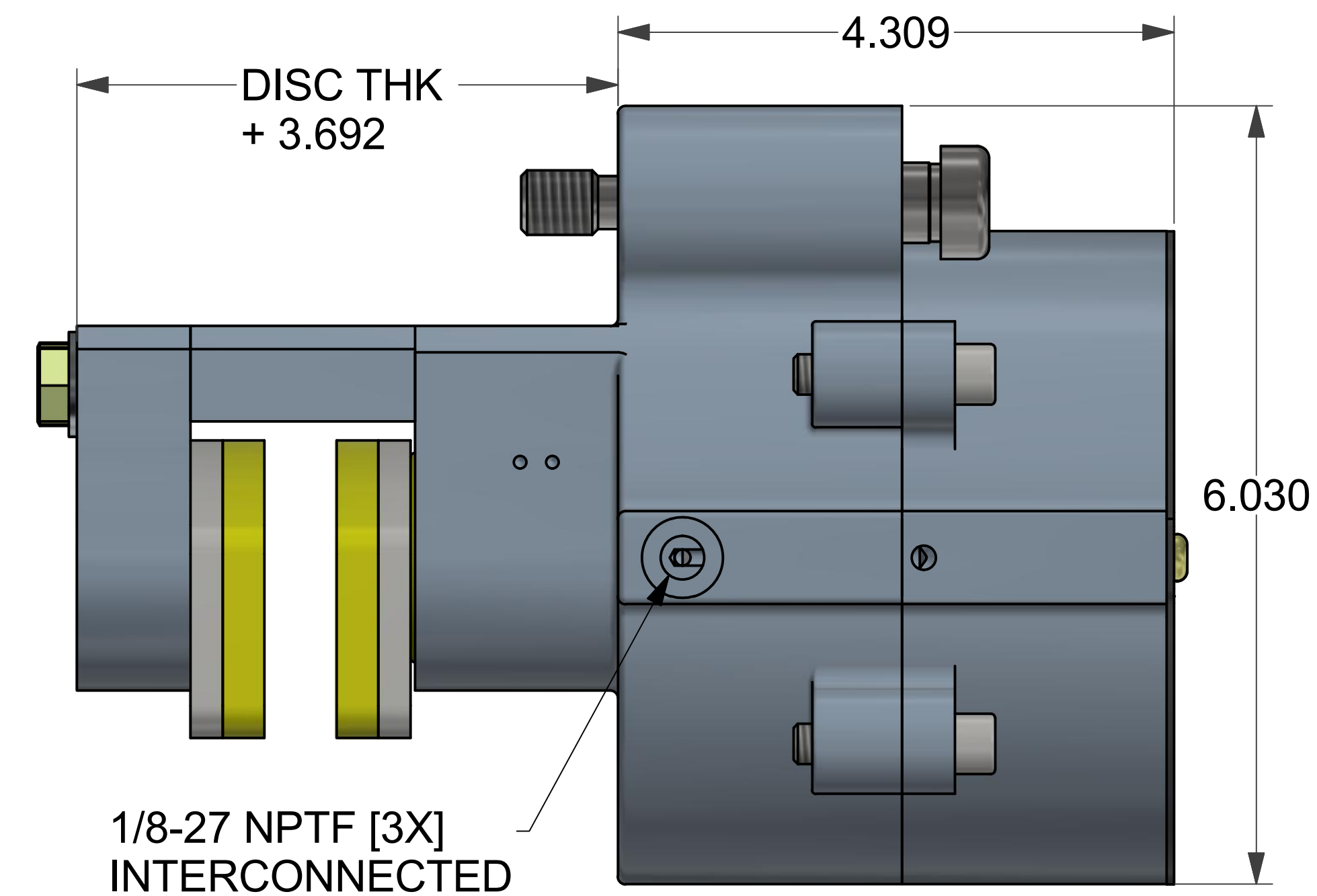
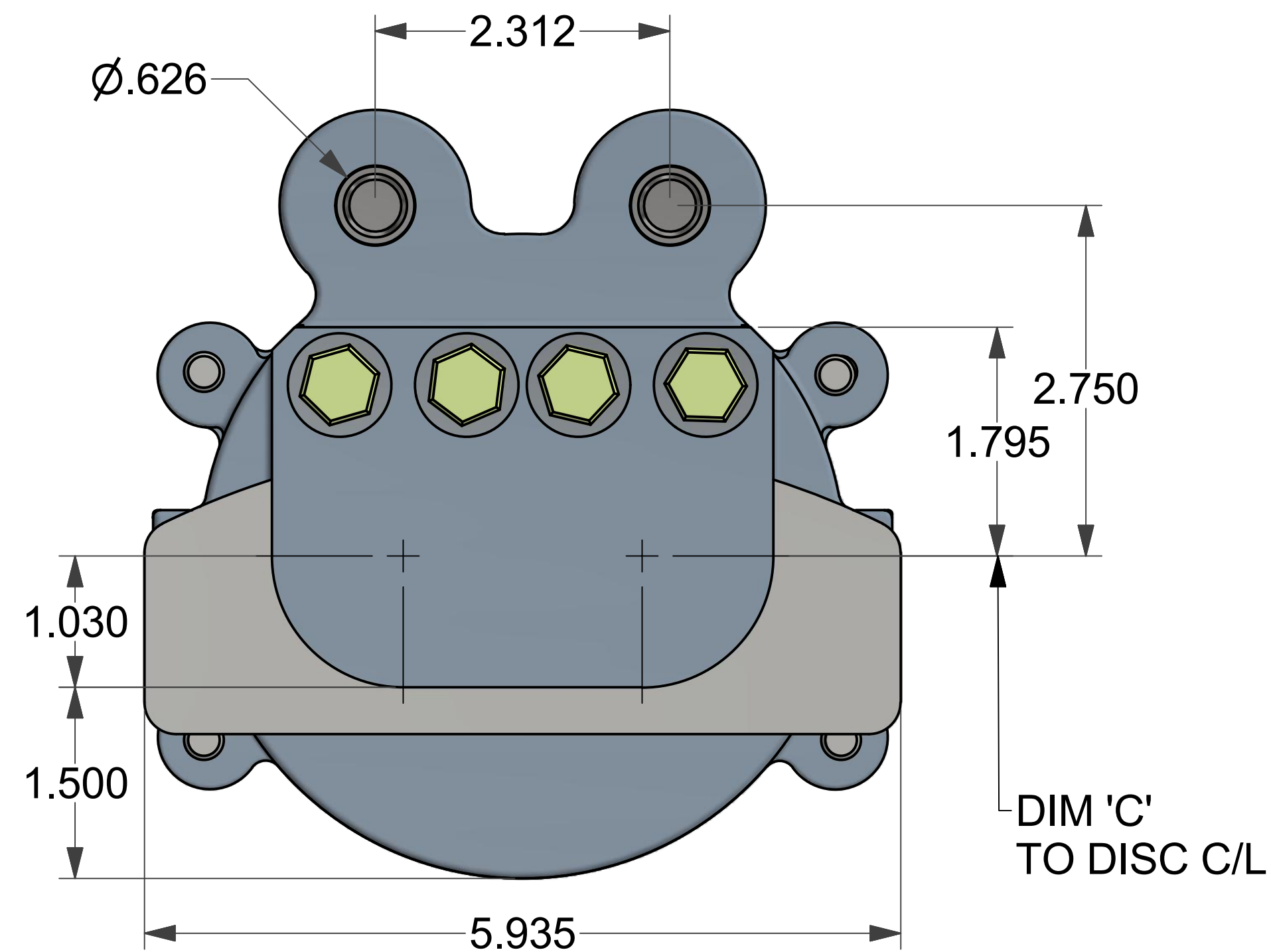
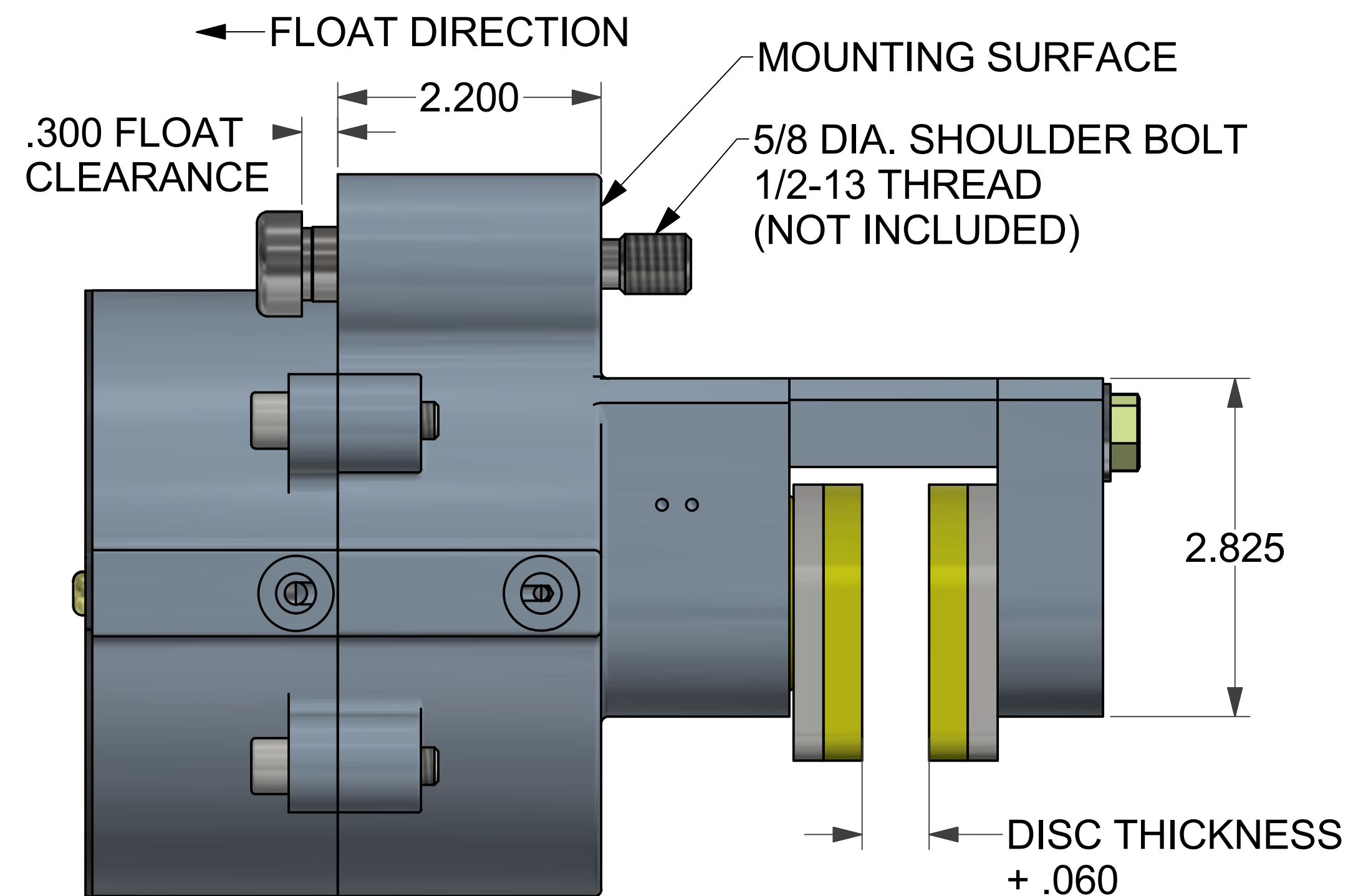
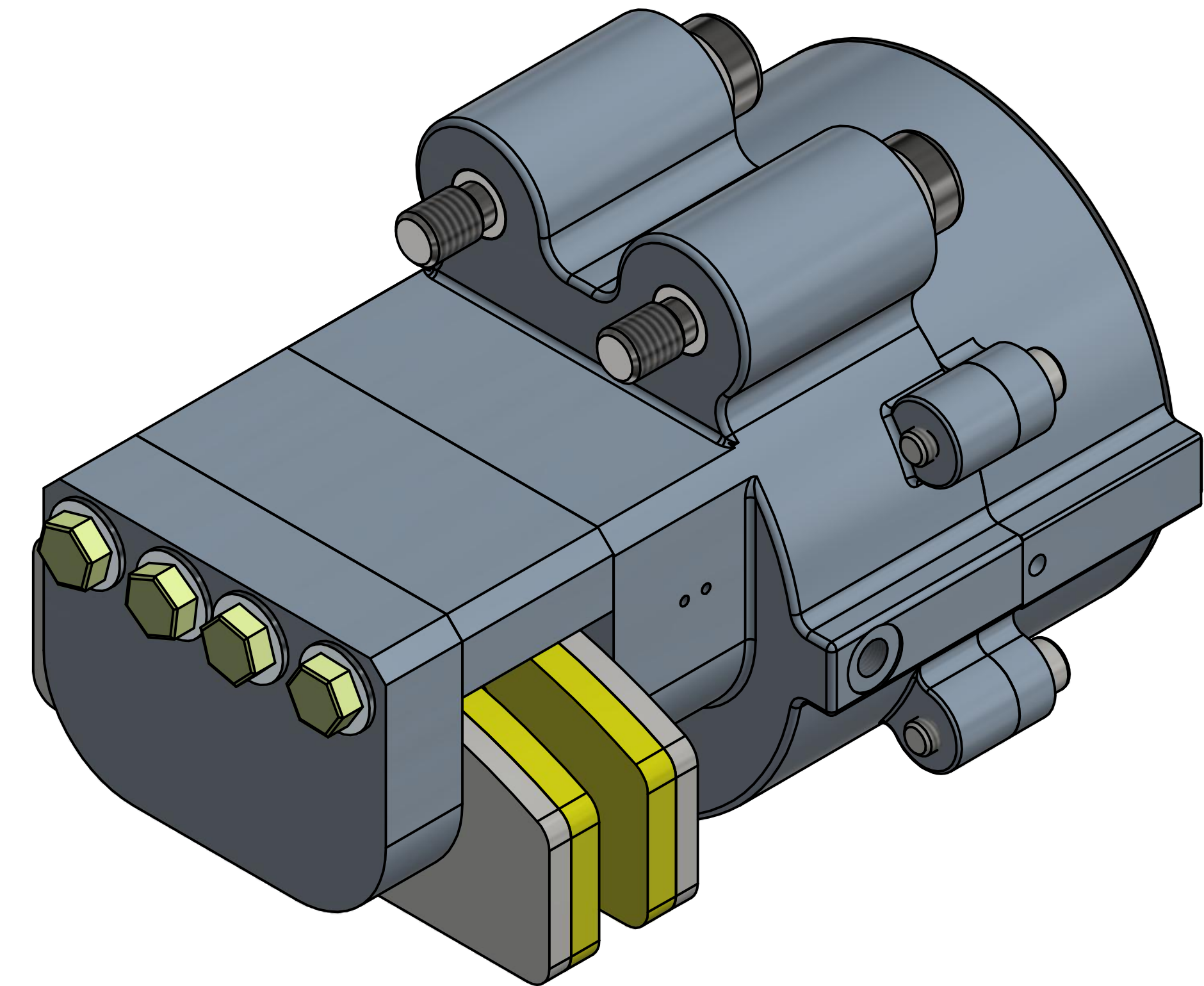


| PART NO. | MODEL | DISC THK. |
|-----------|-------------|-----------|
| 4005-0139 | PFS200AF-EP | 5/32 |
| 4005-0140 | PFS200IF-EP | 3/16 |
| 4005-0141 | PFS200BF-EP | 1/4 |
| 4005-0142 | PFS200LF-EP | 3/8 |
| 4005-0143 | PFS200EF-EP | 1/2 |
| 4005-0144 | PFS200JF-EP | 5/8 |
| 4005-0145 | PFS200TF-EP | 3/4 |
| 4005-0146 | PFS200OF-EP | 1.0 |
| 4005-0147 | PFS200QF-EP | 1.125 |


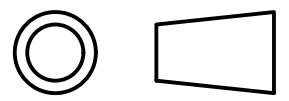
| TOTAL PAD WEAR, INCHES | TANGENTIAL FORCE, LBS. |
|------------------------|------------------------|
| 0 | 929 |
| .06 | 774 |
| .12 | 619 |
| .18 | 464 |
| .24 | 309 |
| .30 | 154 |
| .36 | 0 |

- *PFS200 SERIES BRAKES ARE FOR EMERGENCY STOP & HOLD APPLICATIONS ONLY.
- * SPACERS ARE AVAILABLE FOR OTHER DISC THICKNESSES.
- * TORQUE, IN. LBS. = TANGENTIAL FORCE, LBS. X BRAKING RADIUS, INCHES
- * 85 PSI RELEASE PRESSURE
- * CAST ALUM. CONSTRUCTION
- * HARDCOATED HOUSINGS
- * 23.89 SQ. INCHES TOTAL FRICTION PAD AREA
- * UNLIMITED DISC DIAMETERS
- * REPLACEABLE FRICTION PADS
- * 2,065 LBS. OF CLAMPING FORCE
- * .45 COFF. OF FRICTION
- * DUAL BELLEVILLE DISC SPRING STACKS. 12 EACH
- * NON-ASBESTOS FRICTION MATERIAL
- * BUNA N SEALS, VITON OPTIONAL
- * 7.72 CUBIC INCHES WEARABLE VOLUME



BRAKING RADIUS, INCHES = SQ. ROOT (DIM. 'C' SQUARED + .8789)

| DISC DIA. | DIM. 'C' | BRAKING RADIUS |
|-----------|----------|----------------|
| 12.0 | 5.03 | 5.11 |
| 16.0 | 7.03 | 7.09 |
| 18.0 | 8.03 | 8.08 |
| 20.0 | 9.03 | 9.08 |
| 30.0 | 14.03 | 14.06 |

| | | | | | |
|---|--|---------------------|---|--------------------|------------|
|  WC BRANHAM® SOLUTIONS IN MOTION 398 TROY STREET • RIVER FALLS, WISCONSIN 54022 U.S.A. © 2015 W.C. Branham Inc. All Rights Reserved. | | | | | |
| UNLESS OTHERWISE SPECIFIED: DO NOT SCALE DRAWING REMOVE ALL BURRS TAP DEPTHS FULL THRD DRILL DEPTHS FULL DIA. | THIRD ANGLE PROJECTION  | | DESIGNER | DATE | |
| | | | CR | 12/26/2010 | |
| TOLERANCES .XX = ± .010 .XXX = ± .005 .XXXX = ± .0005 | MATERIAL | | REVISED BY | DATE | |
| | | | | | |
| THREADS EXTERNAL CLASS 2A INTERNAL CLASS 2B | WEIGHT N/A | | TITLE PFS200-EP SERIES SPRING APPLIED/AIR RELEASE | | |
| | | | | | |
| SCALE 1 : 1 | | SHEET 1 of 1 | SIZE D | DRAWING NO. | REV |