



Product Brochure

44mm

25mm

Models

Table of Contents

44mm Bore Models 3

➤	44mm Dimensions	5
	OVP/OVPMX-44 MS:	5
	OVP/OVPMX-44 MR:	5
	OVP/OVPMX-44 FS:	6
	OVP/OVPMX-44 FR:	6
➤	44mm Mounts	7
	Flange Mounts	7
	Clevis Mounts	8
➤	Features & Details	9

25mm Bore Models 11

➤	25mm Dimensions	13
	OVP/OVPMX-25 MS:	13
	OVP/OVPMX-25 MR:	13
	OVP/OVPMX-25 FS:	14
	OVP/OVPMX-25 FR:	14
➤	25mm Mounts	15
	Flange Mounts	15
	Clevis Mounts	16
➤	Sensors	17
➤	Ordering	18

44mm Bore Models

Models Consists of:

- OVP/OVPMX - 44 MS
- OVP/OVPMX - 44 MR
- OVP/OVPMX - 44 FS
- OVP/OVPMX - 44 FR



Did you know? W.C. Branham Inc. can design and manufacture custom cylinders to meet your unique or special application needs. Contact your W.C. Branham Representative to discuss your requirements.

Applications & Attributes

Use OVLPRO 44 on these Applications:

- › Packaging Machinery
- › Material Handling
- › Automated Assembly
- › Conveying Systems
- › Wire Machinery
- › Food Processing Machinery
- › Automated Sorting
- › Bottling and Filling Systems
- › Paper Converting Machinery
- › Ergonomic Systems



ATTRIBUTES:

- › 44mm (1.75") Bore.
- › Single End Porting.
- › Rod Wiper and Multi-Seal Rod Seal.
- › Bronze Rod Bearing.
- › HPCB High Performance Composite Rod Bearing - OVLPRO™ MX.
- › 5/8" Dia. Hard Chrome Plated Rod.
- › 5/8" Dia. 303 Stainless Steel Hard Chrome Plated Rod - OVLPRO™ MX.
- › Stainless Steel Fasteners and Hardware - OVLPRO™ MX.
- › 1/2" Fixed Pneumatic Cushions.
- › 1/4-18 NPTF Ports.
- › Piston Magnet.
- › 200 PSI (13.79 Bar) Max Pressure.
- › 2D/3D CAD files available for download at WCBranham.com

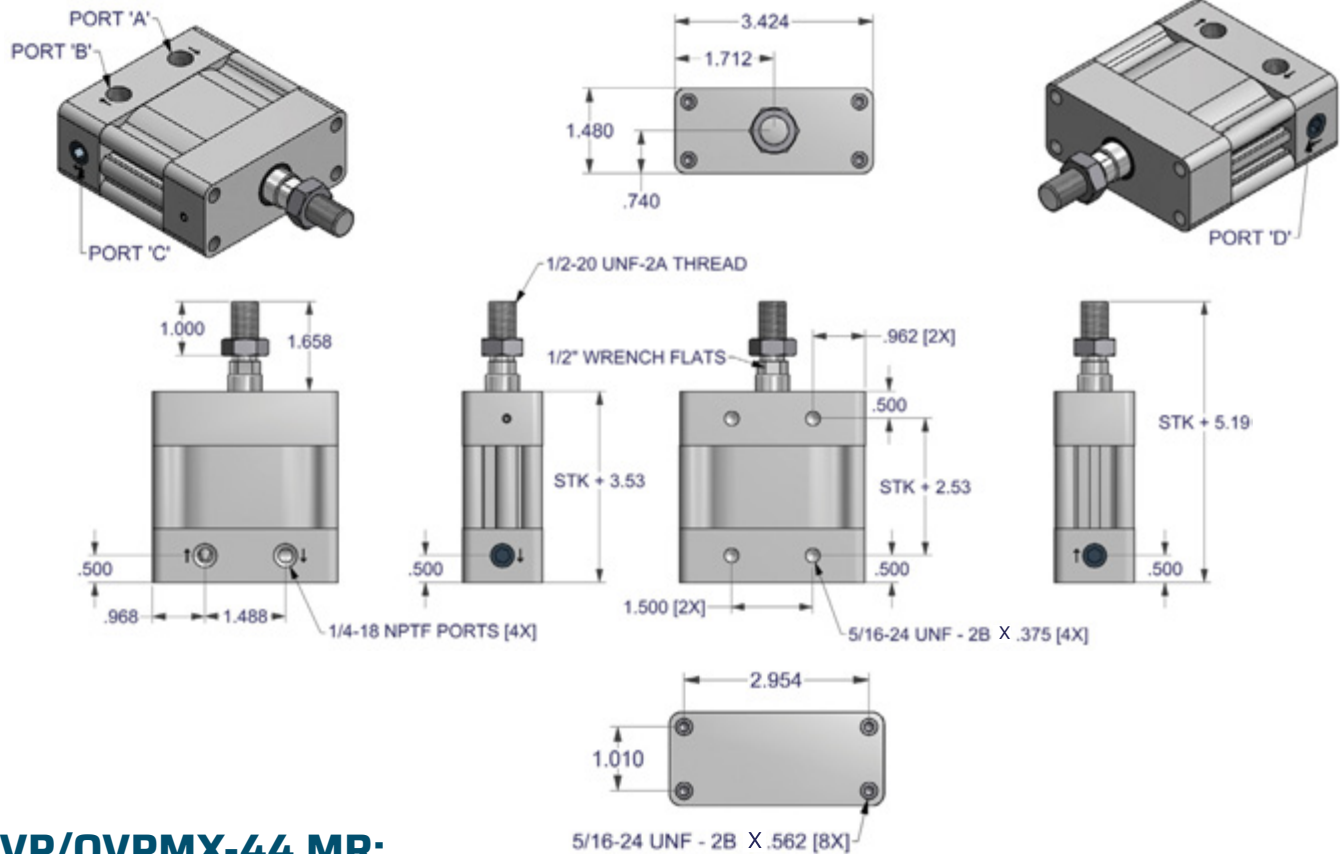
PERFORMANCE:

- › 241 Lbs Per 100 PSI Extend Force
- › 210 Lbs Per 100 PSI Retract Force
- › 2.41 Sq.-In. Piston Area (Ae) Extend
- › 2.10 Sq.-In. Piston Area (Ar) Retract
- › Extend Force (Fe)=Ae x Pressure
- › Retract Force (Fr)=Ar x Pressure
- › 0 deg F. to +180 deg F.
- › Use Viton® Seals for higher temp needs

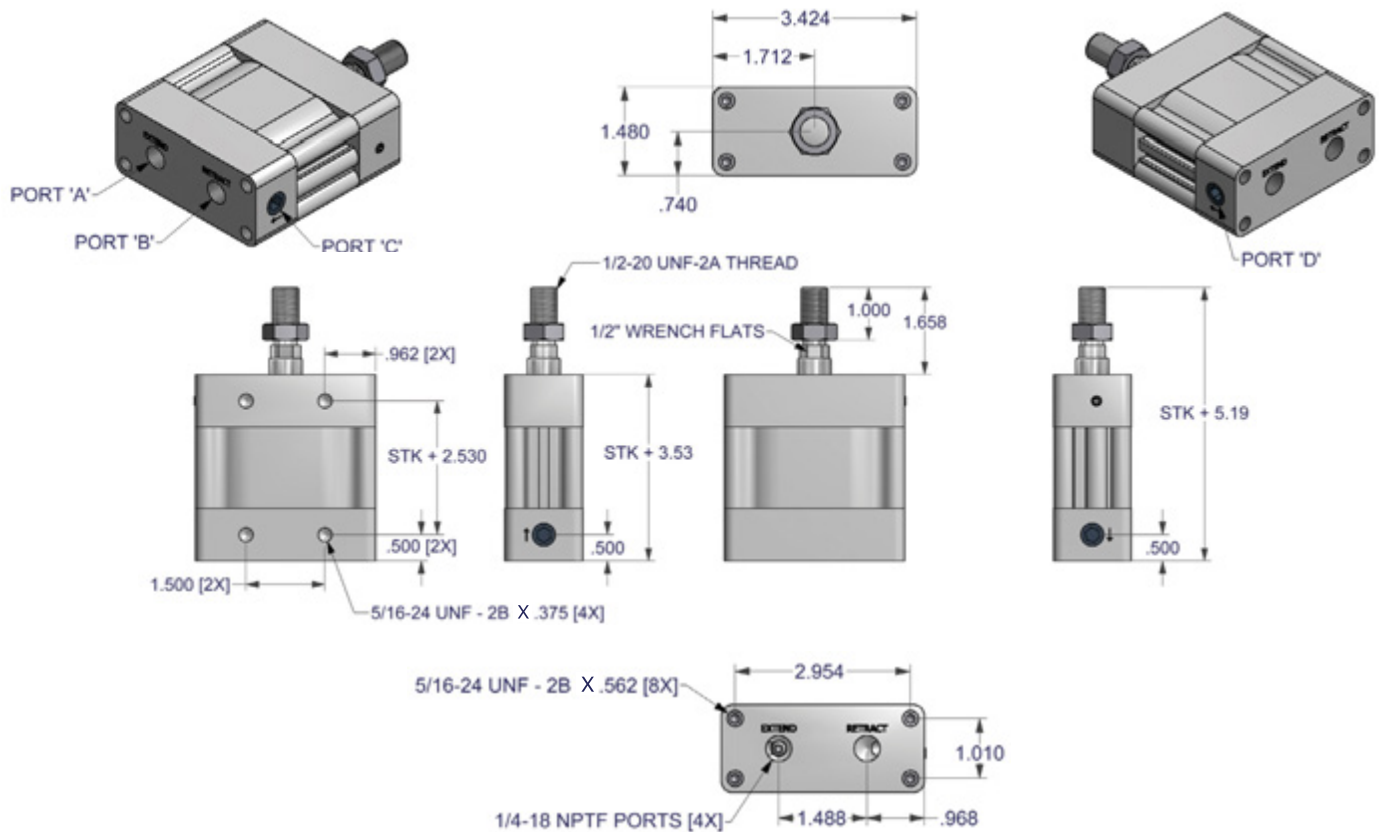
OPTIONS:

- › Reed Switch and Solid State Sensors
- › G1/4 BSPP Porting
- › Flange Mount Front or Rear
- › Flange Mount Side
- › Clevis Mount Horizontal
- › Clevis Mount Vertical

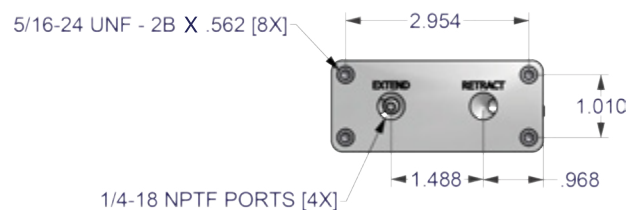
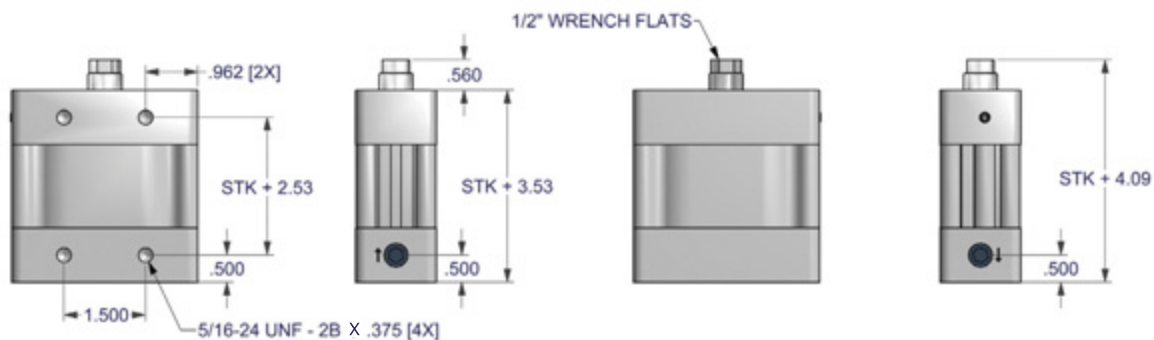
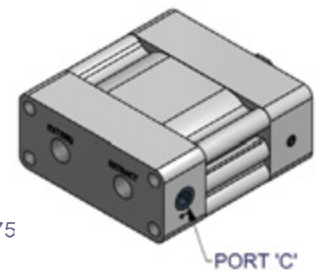
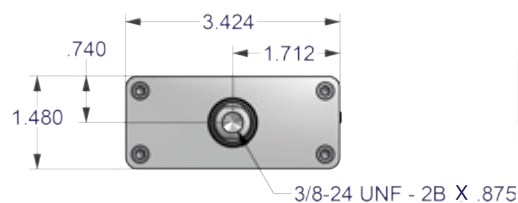
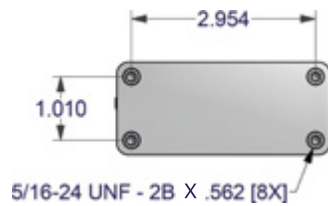
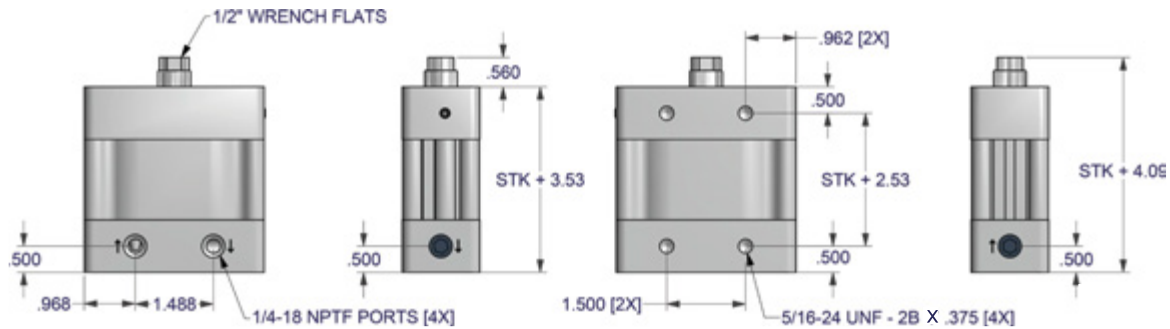
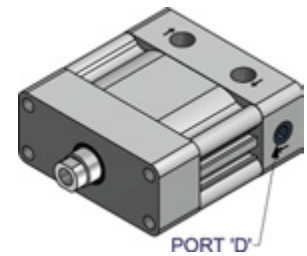
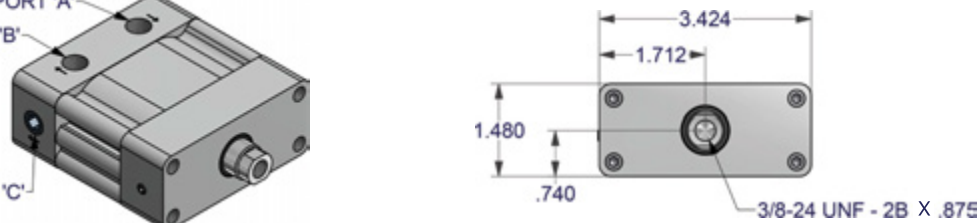
➤ OVP/OVPMX-44 MS:



➤ OVP/OVPMX-44 MR:



A 3D perspective diagram of a solenoid valve. The valve has a rectangular body with a cylindrical solenoid coil in the center. On the left side, there are three ports labeled 'PORT A', 'PORT B', and 'PORT C' from top to bottom. On the right side, there is a single port with a threaded cap.



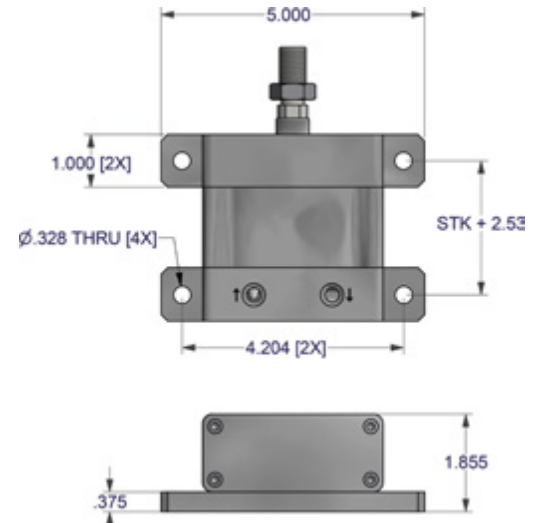
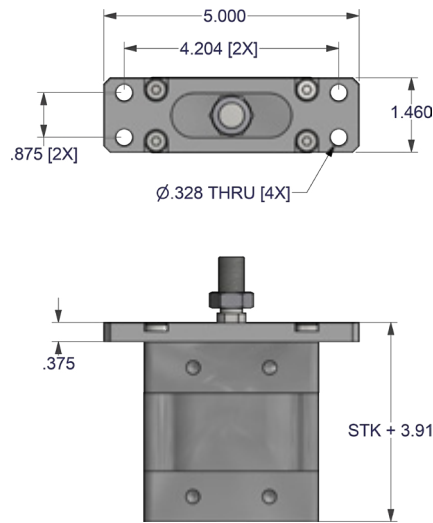
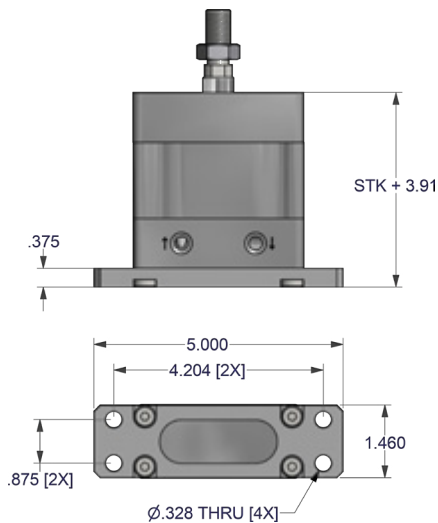
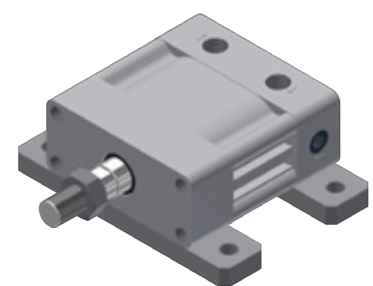
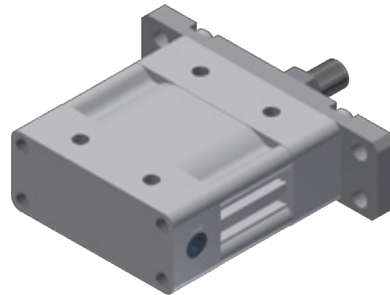
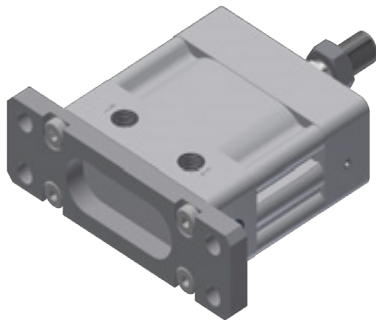
Flange Mounts

Flange mount kits include mount and (4) mounting screws.

FL-Rear

FL-Front

FLS-Side



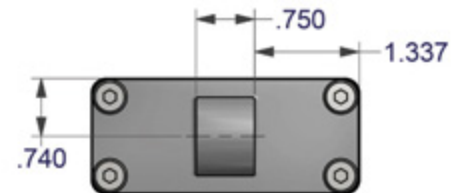
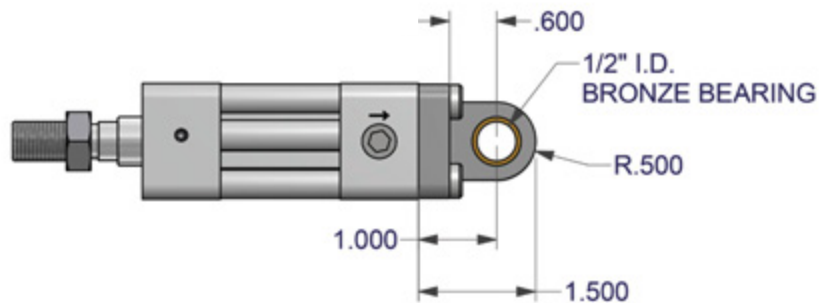
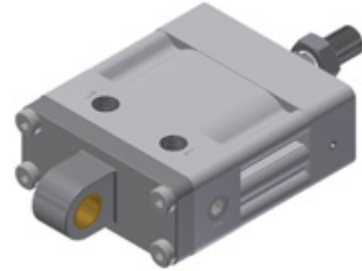
FL Kit P/N 2044-9001

FLS Kit P/N 2044-9002

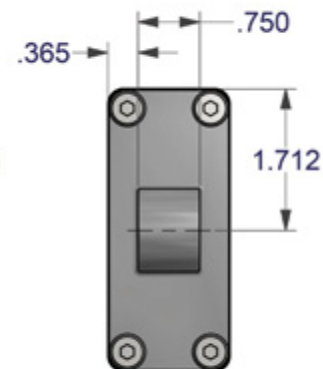
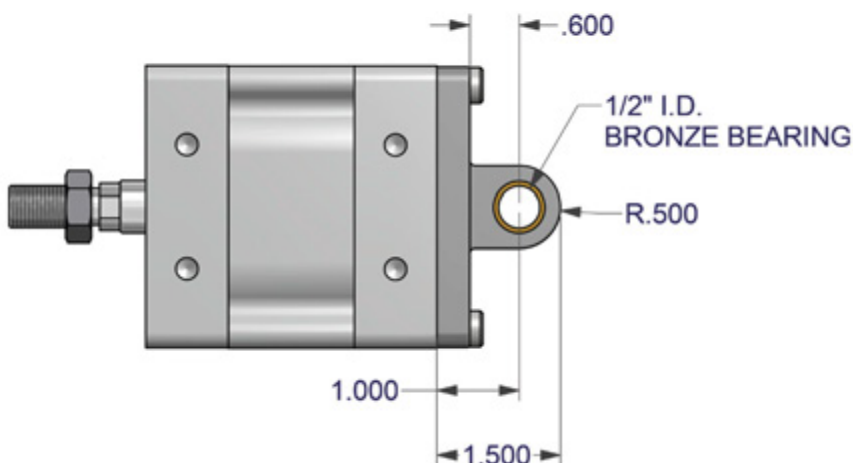
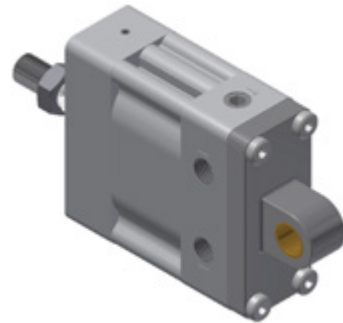
Clevis Mounts

Clevis mount kits include mount and (4) mounting screws.
Consult factory about clevis rod ends.

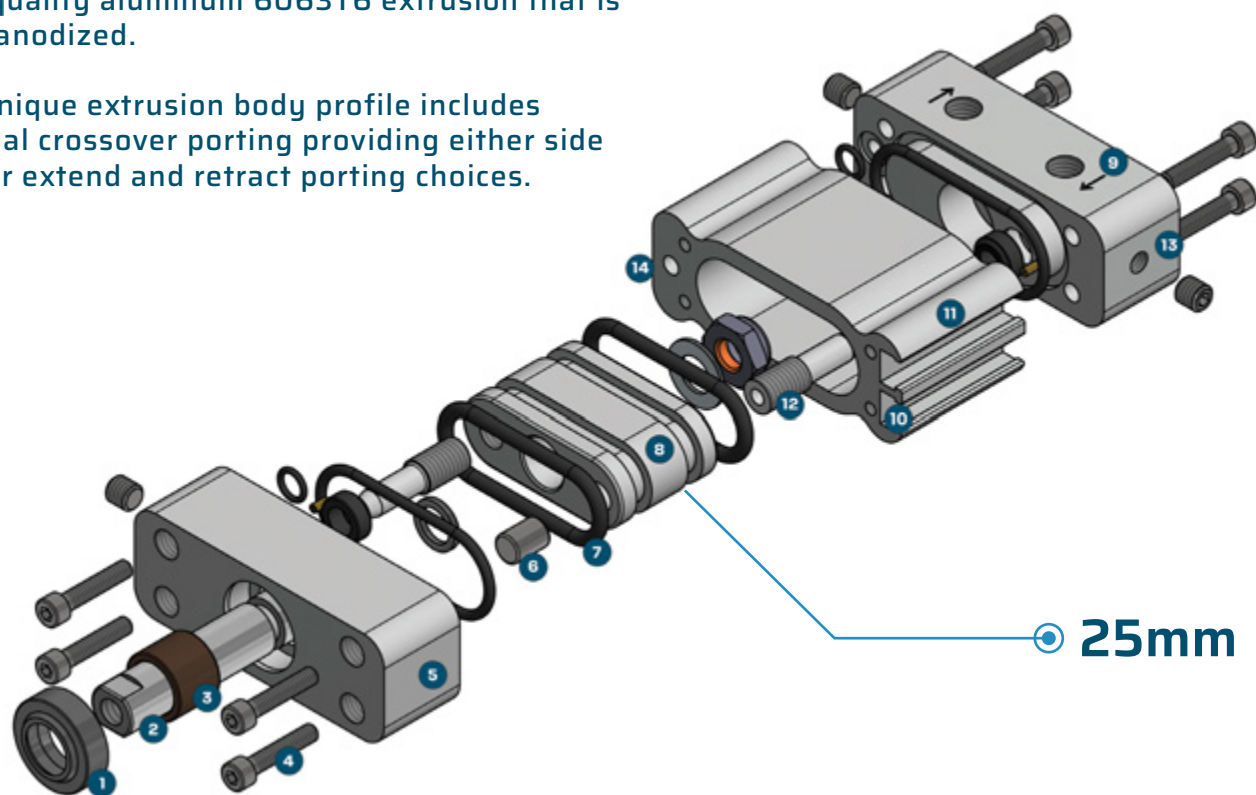
➤ Horizontal Kit P/N 2044-9003:



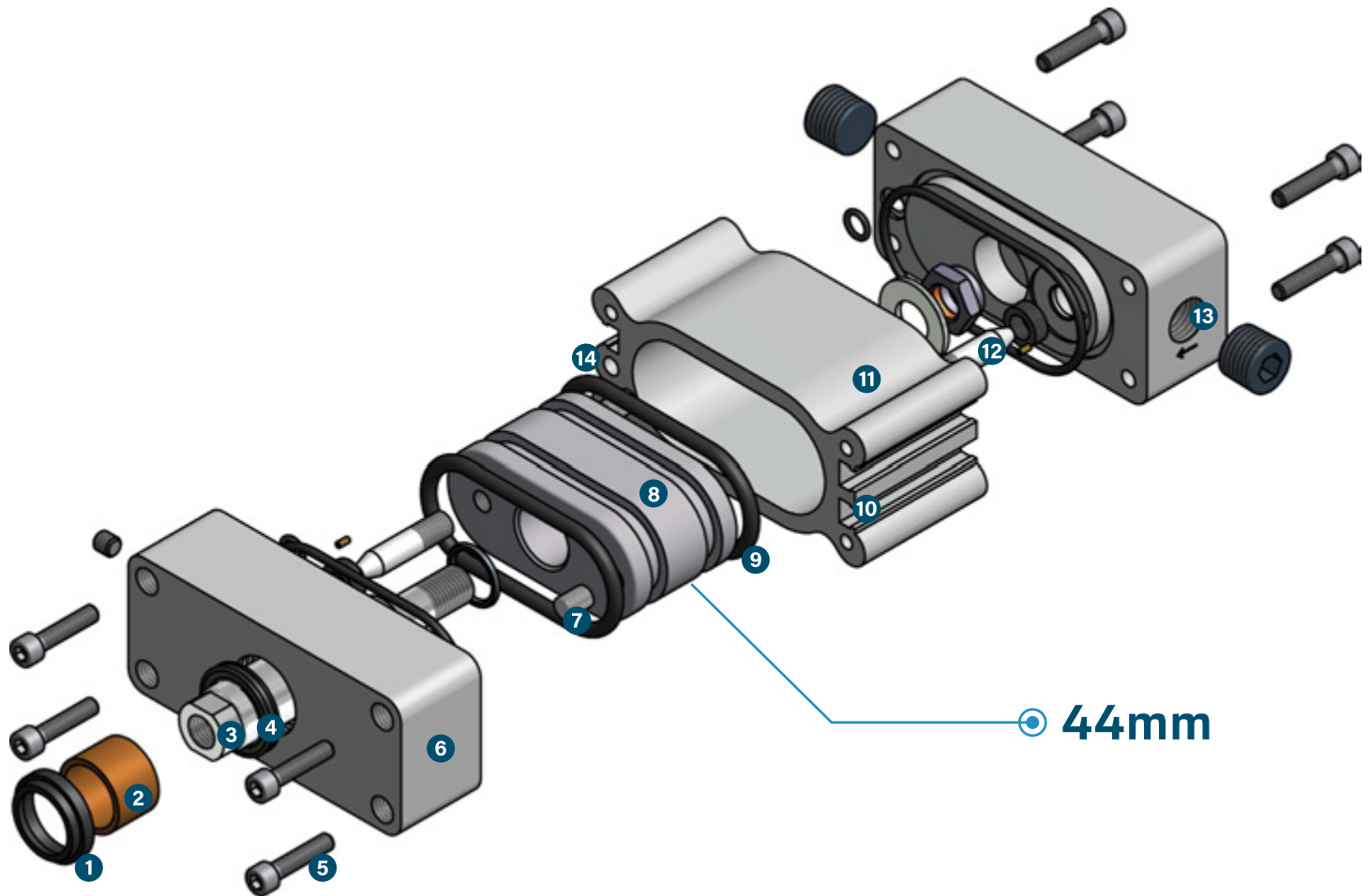
➤ Vertical Kit P/N 2044-9004:



- OVLPRO air cylinders are compact, lightweight and repairable - not a throw away type. OVLPRO cylinders are also pre-lubricated for high duty cycles.
- Lubrication is Teflon® based leaving a protective film on metal parts and is virtually unaffected by corrosive moisture and does not migrate from hot surfaces generated by friction.
- The OVLPRO main body is a custom designed, high quality aluminum 6063T6 extrusion that is clear anodized.
- The unique extrusion body profile includes internal crossover porting providing either side or rear extend and retract porting choices.
- A piston magnet is a standard feature making OVLPRO sensor-ready.
- OVLPRO MX includes a stainless steel hard chrome plated rod, stainless steel fasteners and HPCB high performance composite bearing for even greater durability and endurance.



1. One Piece Rod Wiper Seal.
2. Hard Chrome Rod - Standard. Stainless Steel Rod - OVLPRO MX.
3. Bronze Rod Bearing - Standard. HPCB Rod Bearing - OVLPRO MX.
4. Black Oxide Fasteners - Standard. Stainless Steel Fasteners - OVLPRO MX.
5. Precision Machined Aluminum 6061T6, Clear Anodized End Caps.
6. Piston Magnet - Standard.
7. Buna-N Seals, Viton® Seals Optional.
8. Precision Machined Aluminum 6063T6, Clear Anodized Piston.
9. Single End Porting: Side or Rear.
10. T-Slot Grooves for Sensors and Accessories.
11. High Quality Aluminum 6063T6, Clear Anodized IDOD Profile Body.
12. Internal Fixed Cushioning.
13. NPT Multi-Ported End Caps - Standard BSPP Metric Ports - Optional.
14. Internal Crossover for Single End Porting.



1. Rod Wiper Seal
2. Bronze Rod Bearing - Standard. HPCB Rod Bearing - OVLPRO MX.
3. Hard Chrome Rod - Standard. Stainless Steel Rod - OVLPRO MX.
4. Multi-Lip Rod Seal.
5. Black Oxide Fasteners - Standard. Stainless Steel Fasteners - OVLPRO™ MX.
6. Precision Machined Aluminum 6061T6, Clear Anodized End Caps.
7. Piston Magnet - Standard.
8. Precision Machined Aluminum 6063T6, Clear Anodized Piston.
9. Buna-N Seals, Viton® Seals Optional.
10. T-Slot Grooves for Sensors and Accessories.
11. High Quality Aluminum 6063T6, Clear Anodized IDOD Profile Body.
12. Internal Fixed Cushioning.
13. NPT Multi-Ported End Caps - Standard BSPP Metric Ports - Optional.
14. Internal Crossover for Single End Porting.

25mm Bore Models

Models Consists of:

- OVP/OVPMX - 25 MS
- OVP/OVPMX - 25 MR
- OVP/OVPMX - 25 FS
- OVP/OVPMX - 25 FR



Did you know? W.C. Branham Inc. can design and manufacture custom cylinders to meet your unique or special application needs. Contact your W.C. Branham Representative to discuss your requirements.

Applications & Attributes

Use OVLPRO 25 on these Applications:

- › Packaging Machinery
- › Material Handling
- › Automated Assembly
- › Conveying Systems
- › Wire Machinery
- › Food Processing Machinery
- › Automated Sorting
- › Bottling and Filling Systems
- › Paper Converting Machinery
- › Ergonomic Systems



ATTRIBUTES:

- › 25mm (1.00") Bore.
- › Single End Porting.
- › One Piece Wiper and Rod Seal.
- › Bronze Rod Bearing.
- › HPCB High Performance Composite Rod Bearing - OVLPRO MX.
- › 3/8" Dia. Hard Chrome Plated Rod.
- › 3/8" Dia. 303 Stainless Steel Hard Chrome Plated Rod - OVLPRO MX.
- › Stainless Steel Fasteners and Hardware - OVLPRO MX
- › 1/2" Fixed Pneumatic Cushions
- › 1/16-27 NPTF and 10-32 UNF Ports
- › Piston Magnet
- › 200 PSI (13.79 Bar) Max Pressure
- › 2D/3D CAD files available for download at WCBranham.com

PERFORMANCE:

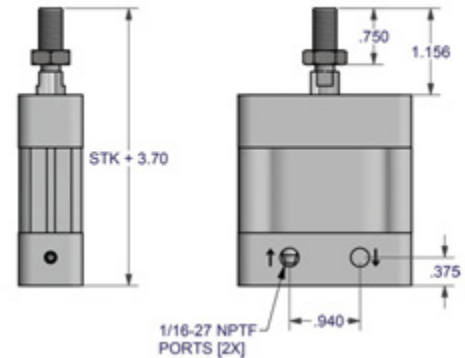
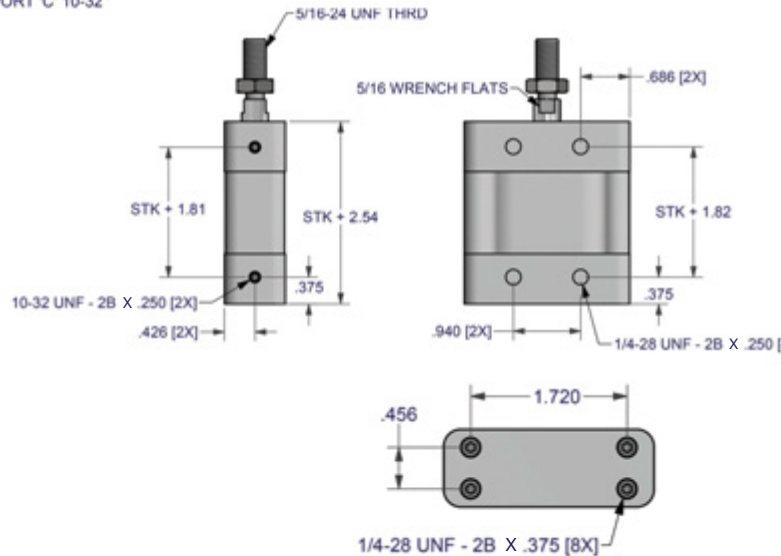
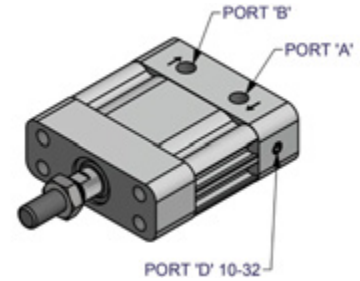
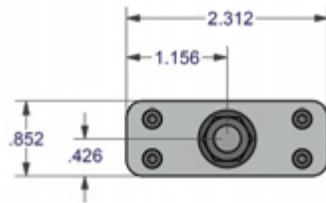
- › 78 Lbs Per 100 PSI Extend Force
- › 67 Lbs Per 100 PSI Retract Force
- › .78 Sq.-In. Piston Area (Ae) Extend
- › .67 Sq.-In. Piston Area (Ar) Retract
- › Extend Force (Fe)=Ae x Pressure
- › Retract Force (Fr)=Ar x Pressure
- › 0 deg F. to +180 deg F.
- › Use Viton® Seals for higher temperature needs.
- › The push/pull load should be externally guided and supported for maximum performance. If not, consult factory regarding your application.

OPTIONS:

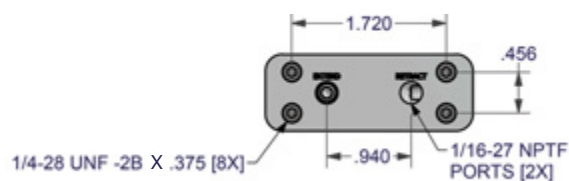
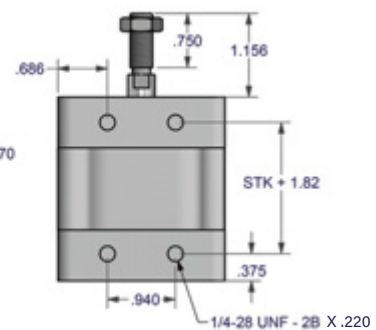
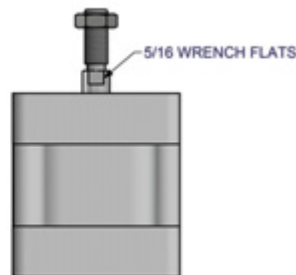
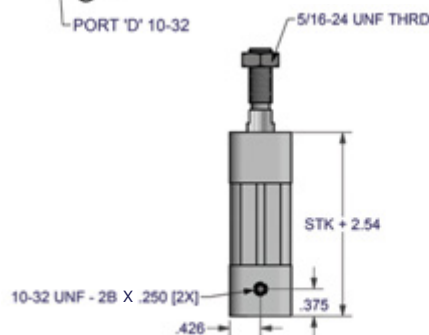
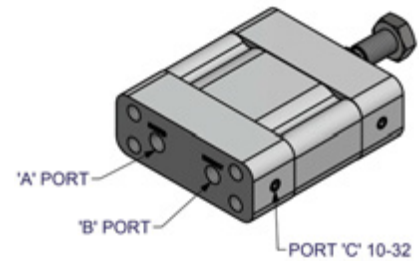
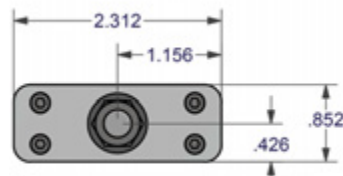
- › Reed Switch and Solid State Sensors
- › G1/16 BSPP Porting
- › Flange Mount Front or Rear
- › Flange Mount Side
- › Clevis Mount Horizontal
- › Clevis Mount Vertical

- MS = Male Threaded Rod, Side Ported
- MR = Male Threaded Rod, Rear Ported

Diagram of the 10-32 Port 'C' on the actuator. A line points to the port on the side of the actuator body.



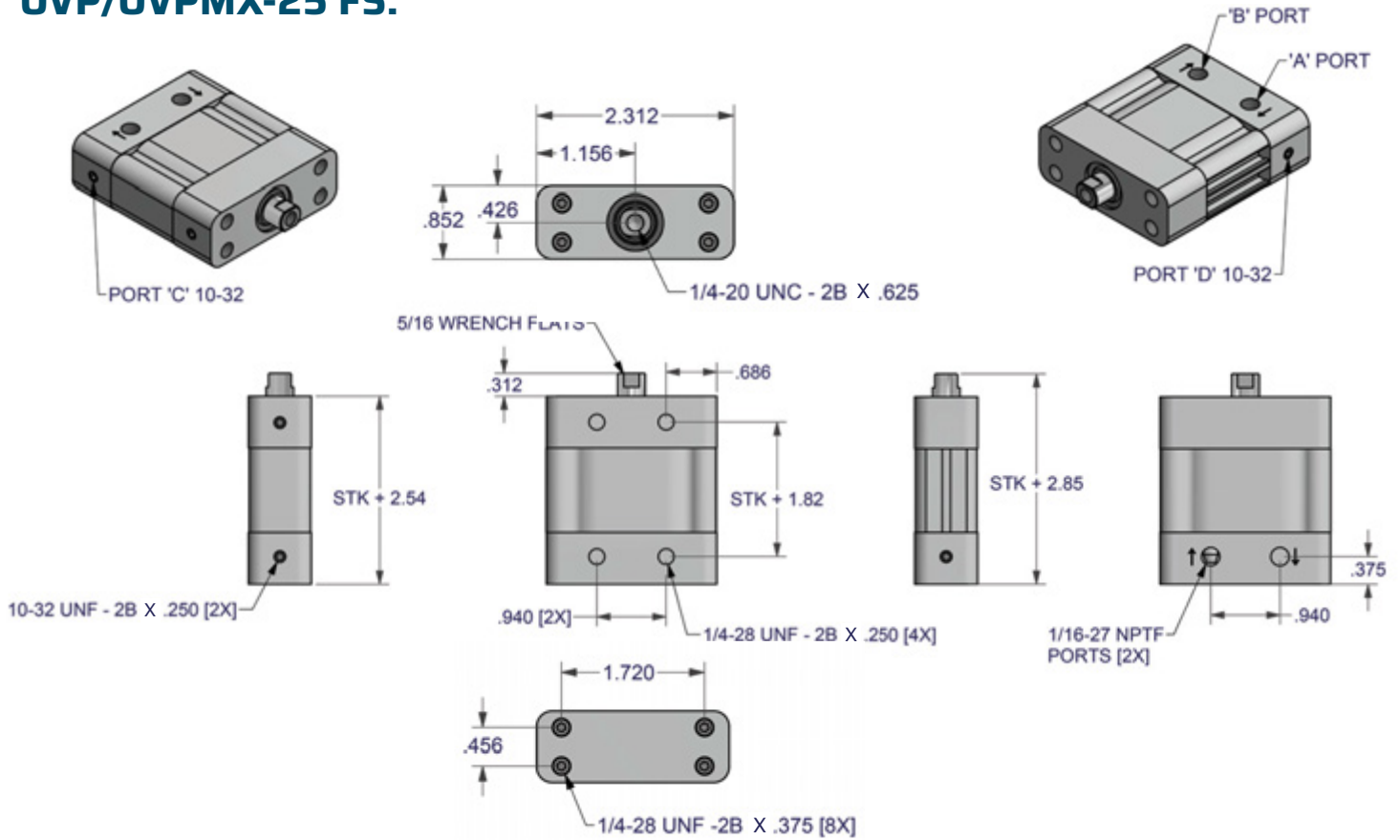
PORT 'D' 10-32



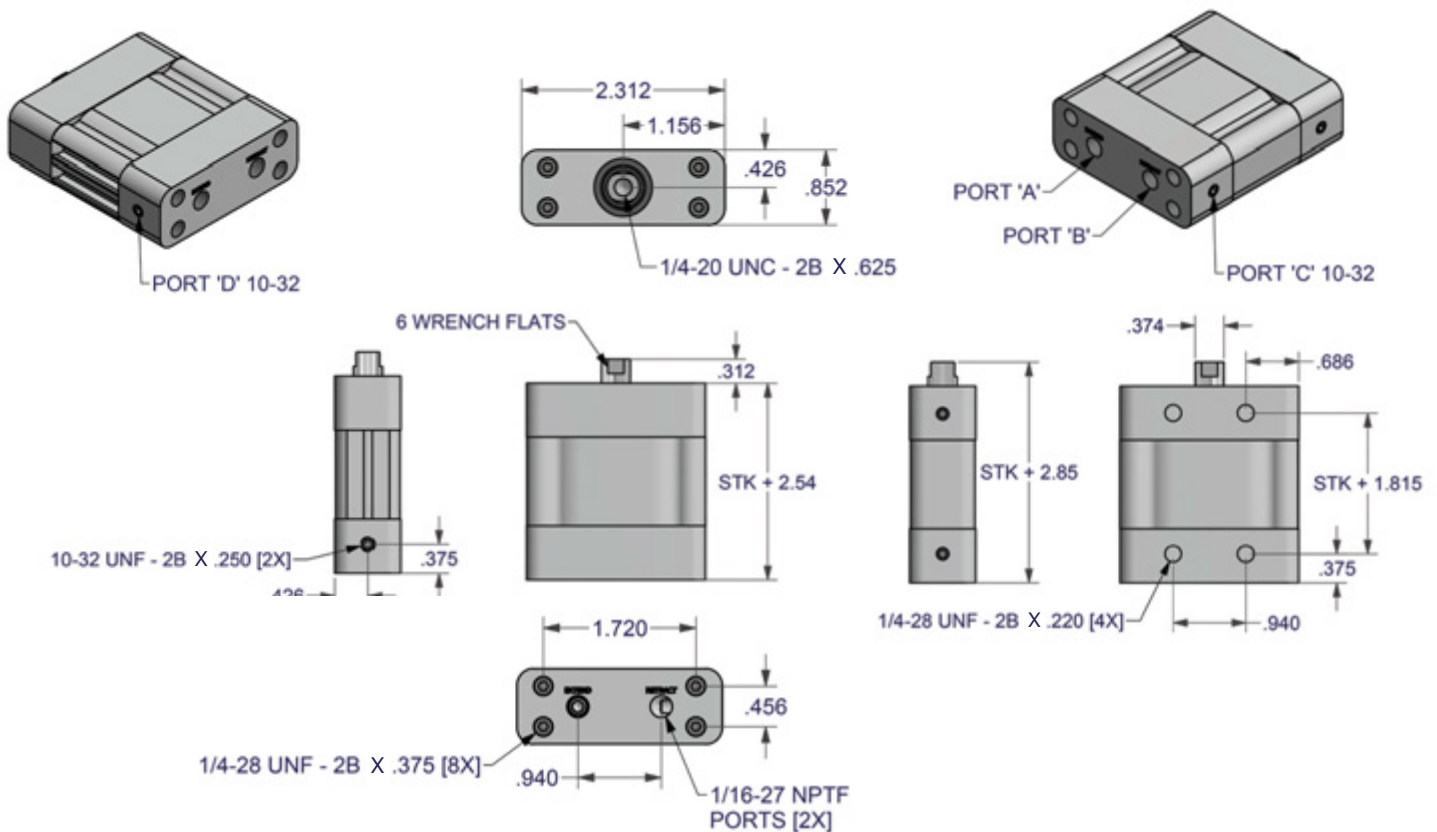
25mm Dimensions

- FS = Female Threaded Rod, Side Ported
- FR = Female Threaded Rod, Rear Ported

OVP/OVPMX-25 FS:



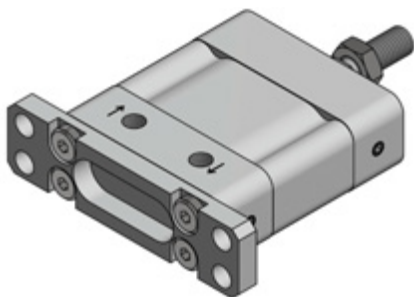
OVP/OVPMX-25 FR:



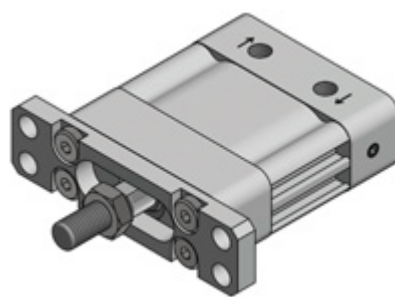
Flange Mounts

Flange mount kits include mount and (4) mounting screws.

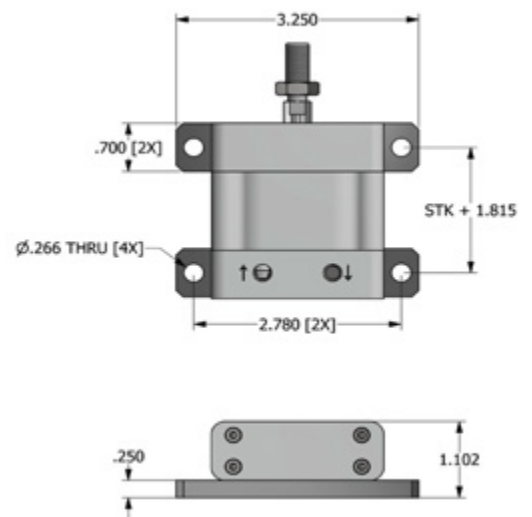
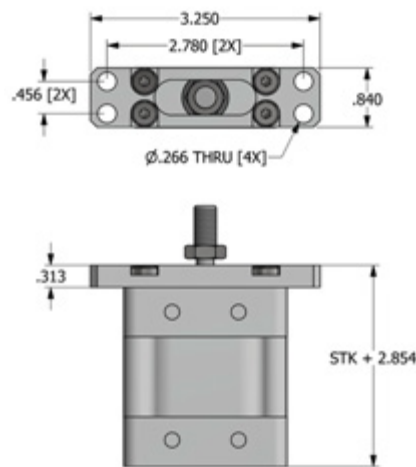
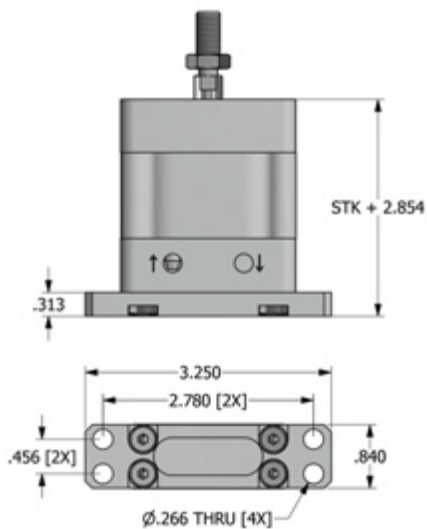
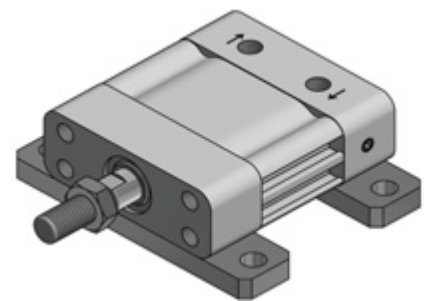
FL-Rear



FL-Front



FLS-Side



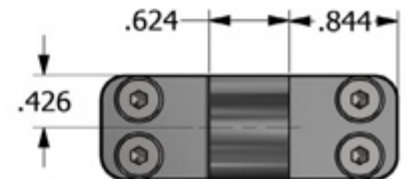
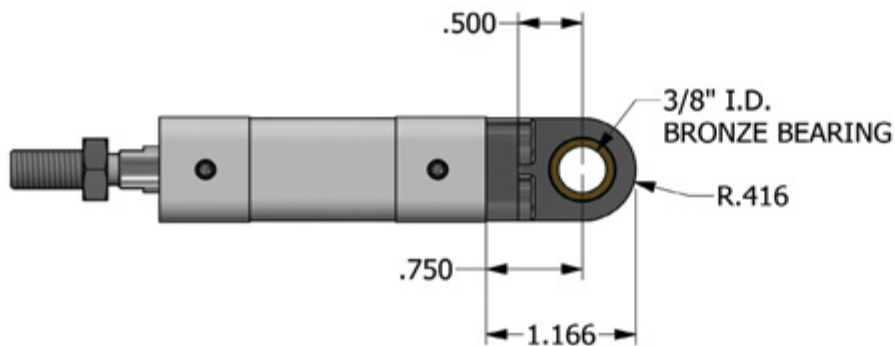
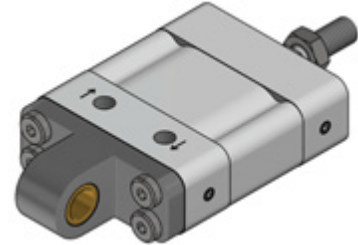
FL Kit P/N 2025-9001

FL Kit P/N 2025-9002

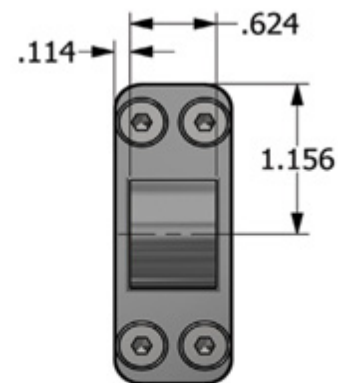
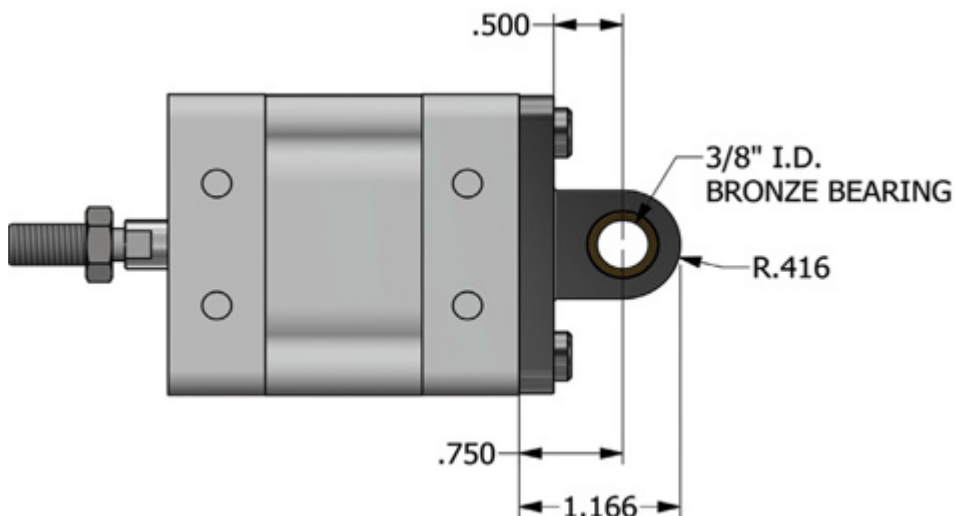
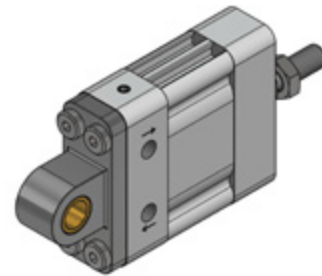
Clevis Mounts

Clevis mount kits include mount and (4) mounting screws.
Consult factory about clevis rod ends.

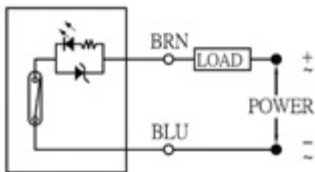
Horizontal Kit P/N 2025-9003



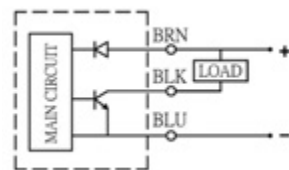
Vertical Kit P/N 2025-9004



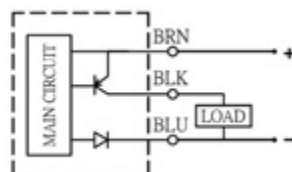
SR50R



SR50N



SR50P



CHARACTERISTICS	SR50R-QD - ORDER #2009-1000	SR50N-QD- ORDER #2009-1001	SR50P-QD ORDER #2009-1002
WIRING METHOD	2-WIRE, QUICK DISCONNECT	3-WIRE, QUICK DISCONNECT	
SWITCHING LOGIC	SPST, NORMALLY OPEN	SOLID STATE OUTPUT, NORMALLY OPEN	
SENSOR TYPE	REED SWITCH	NPN CURRENT SINKING	PNP CURRENT SOURCING
OPERATING VOLTAGE	5-240V AC/DC	10-30 VDC	10-30 VDC
SWITCHING CURRENT	100 mA MAX	200 mA MAX	200 mA MAX
CONTACT RATING (NOTE 1)	10W MAX	6W MAX	
INDICATOR LED	RED	RED	YELLOW
ENCLOSURE CLASSIFICATION	IEC 60529 IP67 (NEMA 6)		
PROTECTION CIRCUIT	NONE	SHORT CIRCUIT, POWER SOURCE REVERSE POLARITY, SURGE SUPPRESSION	

Note 1 - WARNING: Never exceed rating (Watt=Voltage x Amperage). Permanent damage to sensor will occur.

KITS/Mating Cable			
#2009-9000	KIT, SWITCH REED SR50R-QD	QTY (2) SWITCH, REED SR50R-QD	
#2009-9001	KIT, SWITCH NPN SR50N-QD	QTY (2) SWITCH, NPN SR50N-QD	
#2009-9002	KIT, SWITCH PNP SR50P-QD	QTY (2) SWITCH, PNP SR50P-QD	
#2009-9003	KIT, CABLE MATING QD05 5M	QTY (2) CABLE, MATING QD05 5M	
#1625-1025	CABLE, MATING - QD05 5M	QTY (1) CABLE, MATING QD05 5M	

Model Configurator

The order number configurations is as follows:

OVLPRO	Performance	Bore Sizes (mm)	Rod Type Port Locations	Port Actuation	Stroke Length (Inches)
▼	▼	▼	▼	▼	▼
2	0	4 4	- 0 0	A B	- 0 1 . 0 0
▼	▼	▼	▼	▼	▼
OVP	0 - STD 1 - MX	44mm 25mm	00 - MS 01 - MR 02 - FS 03 - FR	44mm AB AC DB DC 25mm AB DC	1, 1.5, 2, 2.5, 3, 3.5, 4, 4.5, 5, 5.5, 6, 8, 10, 12 Select any increment up to 12.0 inches The listed stroke lengths combined with Standard Performance and AB Port Actuation are designated "Quick Ship 3 Days or Less." Confirm with the factory before ordering. Consult factory for longer stroke lengths.

Example:

2044-00AB-01.00 OVP
0 - Standard Version
44mm Bore
Male Rod Side Ported(MS)
AB Port Actuation
01.00 Inch of Stroke Length.

2125-02AB-03.50 OVP
1 - MX Version
25mm Bore
Female Rod Side Ported(FS)
AB Port Actuation
03.50 Inch of Stroke Length.

Options:

Order Sensons and Mounts separately.



Call Toll Free: 1.800.428.1974 (U.S. / Canada)
Phone: 1.715.426.2000
Fax: 1.715.426.1400

AskWCB@WCBranham.com
www.OVLPRO.com
www.wcbranham.com

© 2022. W.C. Branham Inc. All Rights Reserved. All formulae, charts and graphs depicted are theoretical. W.C. Branham Inc. does not imply or state in any terms that they are correct for any given application. It is intended as a guide only. We suggest that each application be prototyped and tested. W.C. Branham Inc. will not be held liable for consequential damages. Specifications and content herein subject to change without notice.

OVLPRO is a registered trademark of W.C. Branham Inc.
Teflon® is a registered trademark of DuPont Corp.
Viton® is a registered trademark of The Chemours Co.
Brochure p/n 9900-9292



44mm



25mm