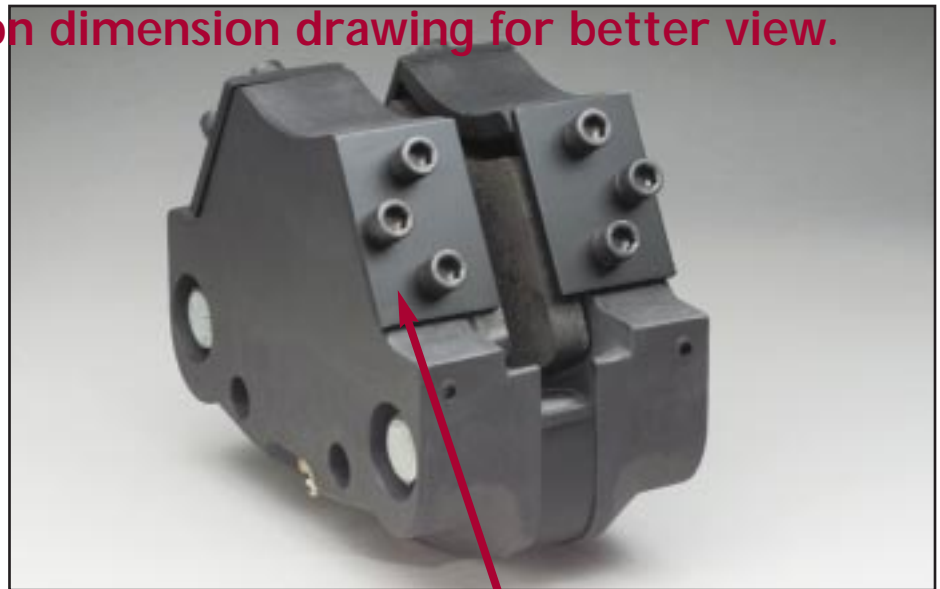


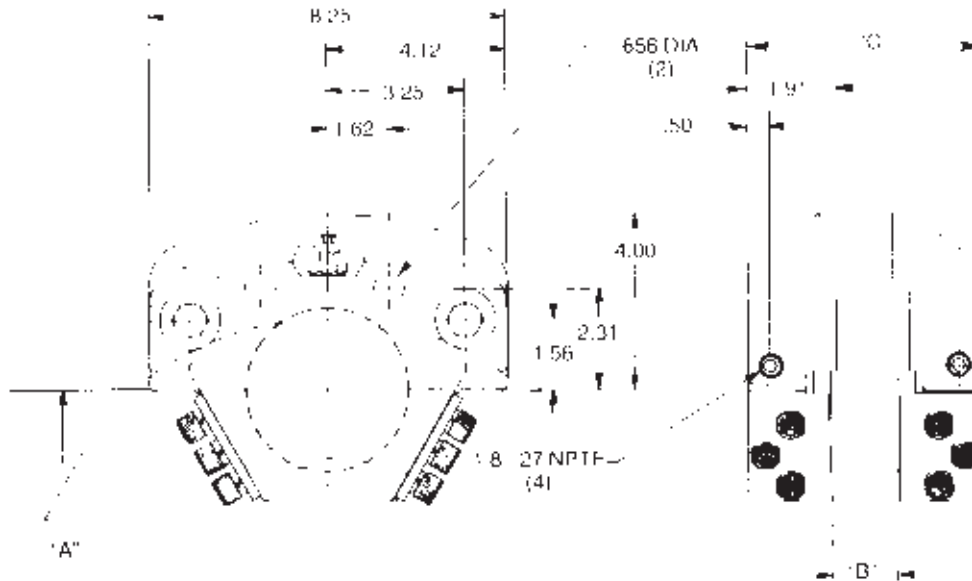
Model H962 - Click on dimension drawing for better view. with quick change pads

Standard features

- Cast aluminum housings
- Replace friction pads without dismounting brake
- 12 -18 inch disc dia.
- 3.5 inch piston dia.
- Double acting, fix mount
- Maximum 1000 psi hydraulic
- Non-asbestos friction material
- 21.96 in² total pad area
- 12.3 in³ wearable volume
- 9.62 in² piston area
- EPR seals optional, (G)



Remove plates for quick access



DISC DIAMETER	BRAKING RADIUS	"A" DIMENSIONAL TO DISC CL	H962 TORQUE	
			DYNAMIC	STATIC
12	4.32	4.375	29937.6	14990.4
14	5.32	5.375	36867.6	18460.4
16	6.32	6.375	43797.6	21930.4
18	7.32	7.375	50727.6	25400.4
-	-	-	-	-

Braking Radius (in.) = [Disc Diameter / 2] - 1.68

AT 1000 PSI, IN. LBS.
1000 PSI MAXIMUM PRESSURE

DISC THK	"B"	"C"
1/2	.63	4.45
3/4	.88	4.70
1 1/8	1.26	5.08

Note:
This model requires customer furnished discs.

