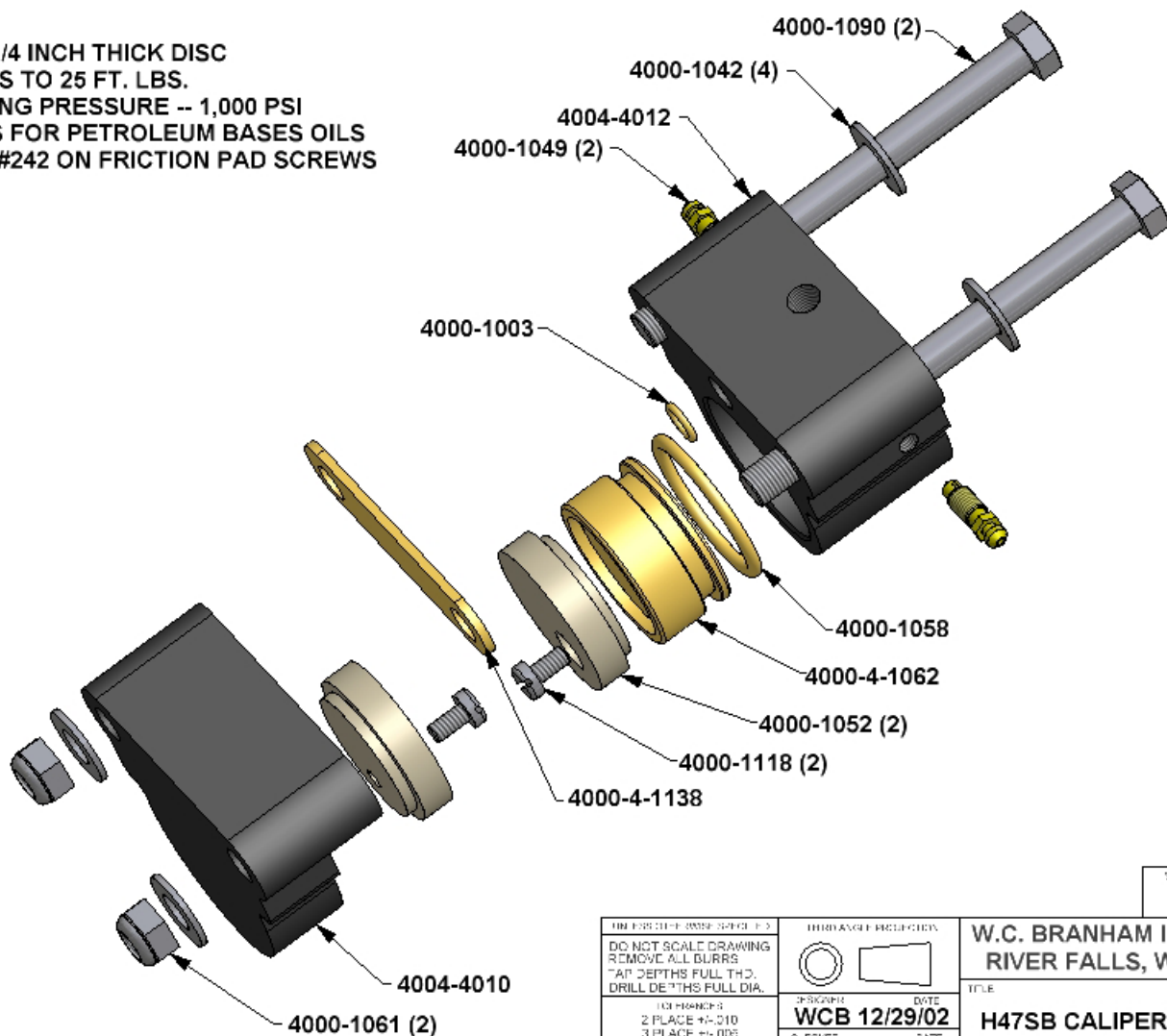


- \* SPACER FOR 1/4 INCH THICK DISC
- \* TORQUE BOLTS TO 25 FT. LBS.
- \* MAX. OPERATING PRESSURE -- 1,000 PSI
- \* BUNA N SEALS FOR PETROLEUM BASES OILS
- \* USE LOC-TITE #242 ON FRICTION PAD SCREWS



DO NOT SCALE DRAWING  
REMOVE ALL BURRS  
TAP DEPTHS FULL THD.  
DRILL DEPTHS FULL DIA.

2 PLACE  $\pm .010$   
3 PLACE  $\pm .005$

EXTERNAL CLASS 2A  
INTERNAL CLASS 2B



DATE  
**WCB 12/29/02**

SCALE  
CLASS

**W.C. BRANHAM INC.**  
**RIVER FALLS, WI.**

TITLE  
**H47SB CALIPER**

DRAWING NO.  
**4004-0044**

SIZE

REVISION