



# ***Pneumatic Rod Cylinders***

***ISO/UNITOP - GUIDED COMPACT - SHORT STROKE***

***Cross Reference Guide***

☎ Tel: 715 426 2000 | 800 428 1974

🌐 [www.WCBranham.com](http://www.WCBranham.com)

✉ [AskWCB@wcbbranham.com](mailto:AskWCB@wcbbranham.com)

📍 398 Troy Street, River Falls,  
Wisconsin, 54022 USA.

November 2022

© 2022. W.C. Branham Inc. , Artec SRL. All Rights Reserved.  
Content is for reference only subject to change without notice.

WC  
**BRANHAM**<sup>®</sup>  
SOLUTIONS IN MOTION

**ARTEC**<sup>®</sup>  
PNEUMATIC COMPONENTS

# ISO/UNITOP Cylinder Series Types

## SERIES

# H



**ISO 15552 Cylinders - Series H**

These cylinders are available with bores from 32 mm to 160 mm. They come in single- or doubleacting versions can be manufactured to withstand high temperatures, and have aluminum profiles with slots for magnetic sensors. Tandem execution is an option with these cylinders.

### COMPETITORS:

#### SMC

CR6 = Series H (ISO 15552) 32mm-125mm

#### FESTO

DSBF = Series H (ISO 15552) Verify seals and FDA grease.  
DSBG = Series H (ISO 15552) Verify seals.  
DNC = Series H (ISO 15552) Verify seals and rod length.  
DSBC = Series H (ISO 15552)

#### BIMBA

ABN = Series H (ISO 15552) 32mm-125mm

#### NORGREN

PDA = Series H (ISO 15552) 32mm-125mm

#### PARKER

P1F = Series H (ISO 15552) 32mm-125mm

#### PHD

CV = Series H (ISO 15552) 32mm-125mm

#### AVENTICS/EMERSON

PRA = Series H (ISO 15552) 32mm-125mm

## SERIES

# Y



**Stainless Steel Versions - Series Y**

### COMPETITORS:

#### FESTO

CRDNG = Series Y (ISO 15552) stainless steel

## SERIES

# X



**ISO 21287 Stainless Steel Compact Cylinders - Series X**

Available in stainless steel AISI 304 and AISI 316 stainless. Available bore sizes ranging from 20mm to 200mm.

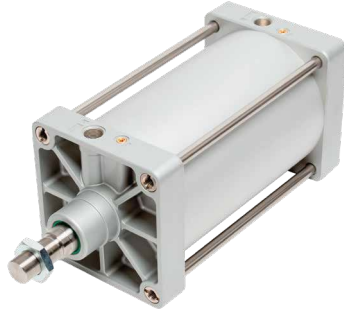
### COMPETITORS:

#### AVENTICS/EMERSON

CCL = Series X (ISO 21287) stainless steel - verify dims and seals

## SERIES

# U



### ISO 15552 Cylinders - Series U

These cylinders are available with bores of 160, 200, 250, and 320 mm. They can be manufactured to withstand high temperatures. There are tandem execution design options available (double-thrust, multi-position, back-to-back)

#### COMPETITORS:

##### SMC

C95 = Series U (ISO 15552) 160mm-320mm

##### NORGREN

DA = Series U (ISO 15552) 160mm-320mm

##### PHD

OCV = Series U (ISO 15552) 160mm-320mm

##### AVENTICS/EMERSON

ITS = Series U (ISO 15552) 160mm-320mm

## SERIES

# P



### ISO 21287 Compact Cylinders - Series P

These smaller cylinders are available with bores from 20 to 125 mm. They can be manufactured to withstand high temperatures. The aluminum profile has slots for magnetic sensors. These can be manufactured with tandem action as well (double-thrust, multi-position, back-to-back).

#### COMPETITORS:

##### SMC

C55 = Series P (ISO 21287) for 16mm use ADM016

##### FESTO

ADN = Series P (ISO 21287) for 16mm use ADM016  
AEN = Series P (ISO 21287) single acting

##### NORGREN

RA = Series P (ISO 21287)

##### PARKER

P1P = Series P (ISO 21287) for 16mm use ADM016

##### AVENTICS/EMERSON

CCI = Series P (ISO 21287) for 16mm use ADM016

## SERIES

# A



### UNITOP Compact Cylinders - Series A

Available in bores ranging from 12mm to 100mm. Aluminum profile body with slots for magnetic sensors. Choose from double acting or single acting with spring extend or retract.

#### COMPETITORS:

##### FESTO

ADVU = Series A (UNITOP cylinders)

## SERIES

# O V Z



**ISO 6432 Micro Cylinders - Series O**  
**Round Body Stainless Steel Cylinder - Series V**  
**ISO 6432 Stainless Steel Micro Cylinders - Series Z**

This compact cylinder is available in bores of 8, 10, 12, 16, 20, 25mm in accordance with ISO 6432. Other bore sizes available 32, 40, 50, and 63mm not included in the standard. It is available with or without cushioning and can be manufactured to withstand high temperatures.

### COMPETITORS:

#### SMC

C85 = Series O (ISO 6432) 8mm-25mm

#### FESTO

DSNU = Series O (ISO 6432) standard 8mm-25mm

CRDSNU = Series Z (ISO 6432) stainless steel  
 12mm-25mm

CRDSNU = Series V stainless steel 32mm-63mm

#### BIMBA

E-- = Series O (ISO 6432) standard 8mm-63mm

#### NORGREN

RM = Series O (ISO 6432) standard 8mm-63mm

KM = Series V stainless steel 32mm-63mm

#### PARKER

P1A = Series O (ISO 6432) standard 8mm-25mm

#### AVENTICS/EMERSON

MNI = Series O (ISO 6432) standard 8mm-63mm

#### NUMATICS/EMERSON

O = Series O (ISO 6432) standard 8mm-63mm

S = Series Z (ISO 6432) stainless steel 12mm-25mm

#### FABCO

FAE = Series O (ISO 6432) standard 8mm-63mm

## SERIES

# E



**Guided Compact Cylinders - Series E**

Available bore sizes of 16, 20, 25, 32, 40, 50, 63mm. Models with or without cushioning. Extruded anodized aluminum body with C slots for magnetic sensors. Choice of bronze bushings or recirculating ball bearings.

### COMPETITORS:

#### SMC

MGP = Series E (Compact Guided Cylinders)

## SERIES

# F



**Short Stroke Cylinders - Series F**

Available in bores of 12 to 100mm. On request execution for high temperatures. Fixing center distances with slotted holes. Aluminum profile with slots for magnetic sensors

### COMPETITORS:

#### SMC

CQ2 = Series F always check dims, rod dia. and threads.

#### BIMBA

MACQ = Series F always check dims, rod dia. and threads.

EF II = Series F non-rotating-always check dims, rod dia and threads.